

Datasheet for ABIN7072229

Recombinant anti-CD37 antibody[Go to Product page](#)**1** Image

Overview

Quantity:	200 µg
Target:	CD37 (TSPAN26)
Reactivity:	Human
Host:	Rabbit
Antibody Type:	Recombinant Antibody
Clonality:	Chimeric
Conjugate:	This CD37 antibody is un-conjugated
Application:	Flow Cytometry (FACS), Immunofluorescence (IF), Immunohistochemistry (IHC)

Product Details

Immunogen:	Chronic lymphocytic leukaemia cells.
Clone:	WR17
Isotype:	IgG kappa
Characteristics:	Original Species of Ab: Mouse Original Format of Ab: IgG2a
Purification:	Purified antibody.

Target Details

Target:	CD37 (TSPAN26)
Alternative Name:	CD37 (TSPAN26 Products)

Target Details

Background:	GP52-40, TSPAN26
UniProt:	P11049
Pathways:	Positive Regulation of Immune Effector Process , Production of Molecular Mediator of Immune Response

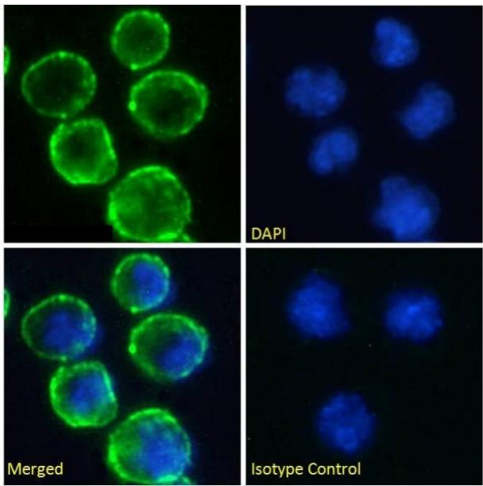
Application Details

Application Notes:	Optimal working dilution should be determined by the investigator.
Comment:	This chimeric rabbit antibody was made using the variable domain sequences of the original murine IgG2a format, for improved compatibility with existing reagents, assays and techniques.
Restrictions:	For Research Use only

Handling

Buffer:	PBS with 0.02 % Proclin 300.
Preservative:	ProClin
Precaution of Use:	This product contains ProClin: a POISONOUS AND HAZARDOUS SUBSTANCE which should be handled by trained staff only.
Storage:	4 °C, -20 °C
Storage Comment:	Store at 4°C for up to 3 months. For longer storage, aliquot and store at -20°C.

Images



Immunofluorescence

Image 1. Immunofluorescence staining of fixed Daudi cells with anti-CD37 antibody WR17. Immunofluorescence analysis of paraformaldehyde fixed Daudi cells on Shi-fix™ coverslips, permeabilized with 0.15 % Triton and stained with the chimeric rabbit IgG version of WR17 (ABIN7072229) at 10 µg/mL for 1h followed by Alexa Fluor®488 secondary antibody (1 µg/mL), showing membrane staining. The nuclear stain is DAPI (blue). Panels show from left-right, top-bottom ABIN7072229, DAPI, merged channels and an isotype control. The isotype

control was stained with an anti-Fluorescein antibody followed by Alexa Fluor®488 secondary antibody.