



[Go to Product page](#)

Datasheet for ABIN7072331

## Recombinant anti-BACE2 antibody

### 2 Images

#### Overview

Quantity:	200 µg
Target:	BACE2
Reactivity:	Human
Host:	Mouse
Antibody Type:	Recombinant Antibody
Clonality:	Monoclonal
Conjugate:	This BACE2 antibody is un-conjugated
Application:	Western Blotting (WB), Immunohistochemistry (IHC)

#### Product Details

Immunogen:	Human BACE2 244-333.
Clone:	1-9
Isotype:	IgG1 kappa
Characteristics:	Original Species of Ab: Mouse Original Format of Ab: IgG
Purification:	Purified antibody.

#### Target Details

Target:	BACE2
Alternative Name:	BACE2 ( <a href="#">BACE2 Products</a> )

## Target Details

Background: Beta-secretase 2, Aspartic-like protease, Aspartyl protease 1, Asp1, Beta-site amyloid precursor protein cleaving enzyme 2, Down syndrome aspartic protease, DRAP, Memapsin-1, Membrane-associated aspartic protease 1, theta-secretase

UniProt: [Q9Y5Z0](#)

## Application Details

Application Notes: Optimal working dilution should be determined by the investigator.

Comment: This reformatted mouse antibody was made using the variable domain sequences of the original Mouse IgG format, for improved compatibility with existing reagents, assays and techniques.

Restrictions: For Research Use only

## Handling

Buffer: PBS with 0.02 % Proclin 300.

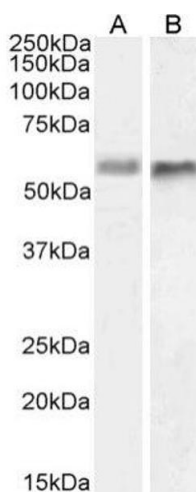
Preservative: ProClin

Precaution of Use: This product contains ProClin: a POISONOUS AND HAZARDOUS SUBSTANCE which should be handled by trained staff only.

Storage: 4 °C, -20 °C

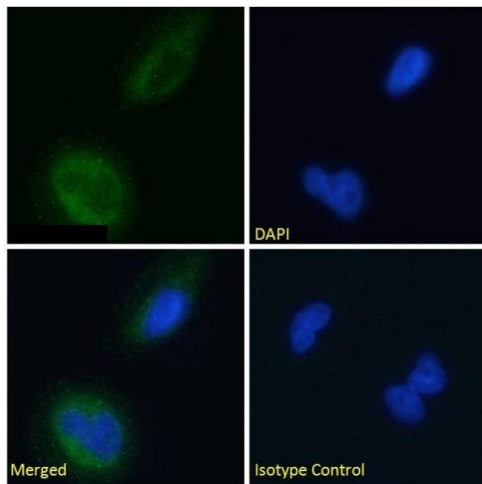
Storage Comment: Store at 4°C for up to 3 months. For longer storage, aliquot and store at -20°C.

## Images



### Western Blotting

**Image 1.** Western Blot using anti-BACE2 antibody 1/9 HeLa (A) and U251 (B) cell lysate samples (35 µg protein in RIPA buffer) were resolved on a 10 % SDS PAGE gel and blots probed with the chimeric mouse IgG1 version of 1/9 (ABIN7072331) at 1 µg/mL before detection using an anti-mouse secondary antibody. A primary incubation of 1h was used and protein was detected by chemiluminescence. The predicted running size for BACE2 is 56.2 kDa. ABIN7072331 successfully detected BACE2 in HeLa and U251 cell lysate



samples.

### Immunofluorescence

**Image 2.** Immunofluorescence staining of fixed U251 cells with anti-BACE2 antibody 1/9. Immunofluorescence analysis of paraformaldehyde fixed U251 cells permeabilized with 0.15 % Triton and stained with the chimeric mouse IgG1 version of 1/9 (ABIN7072331) at 10  $\mu\text{g}/\text{mL}$  for 1h followed by Alexa Fluor®488 secondary antibody (2  $\mu\text{g}/\text{mL}$ ), showing cytoplasmic staining. The nuclear stain is DAPI (blue). Panels show from left-right, top-bottom ABIN7072331, DAPI, merged channels and an isotype control. The isotype control was stained with an anti-unknown specificity antibody followed by Alexa Fluor®488 secondary antibody.