

Datasheet for ABIN7072353

**Recombinant anti-Integrin beta 7 antibody**[Go to Product page](#)**1** Image

## Overview

Quantity:	200 µg
Target:	Integrin beta 7 (ITGB7)
Reactivity:	Human, Mouse
Host:	Rabbit
Antibody Type:	Recombinant Antibody
Clonality:	Chimeric
Conjugate:	This Integrin beta 7 antibody is un-conjugated
Application:	Flow Cytometry (FACS), Immunofluorescence (IF), Blocking Reagent (BR)

## Product Details

Immunogen:	FIB504 was prepared by immunizing rats with TK1 cells.
Clone:	FIB504
Isotype:	IgG kappa
Cross-Reactivity:	Mouse
Characteristics:	Original Species of Ab: Rat Original Format of Ab: IgG2a
Purification:	Purified antibody.

## Target Details

Target:	Integrin beta 7 (ITGB7)
---------	-------------------------

## Target Details

Alternative Name:	Integrin beta-7 ( <a href="#">ITGB7 Products</a> )
Background:	FIB-27, FIB 27, Fib-27, Fib27, Fib 27, fib27, fib-27, fib 27, Integrin b7, integrin b-7, ITGB7, Gut homing receptor beta subunit
UniProt:	<a href="#">P26011</a>
Pathways:	<a href="#">Integrin Complex</a>

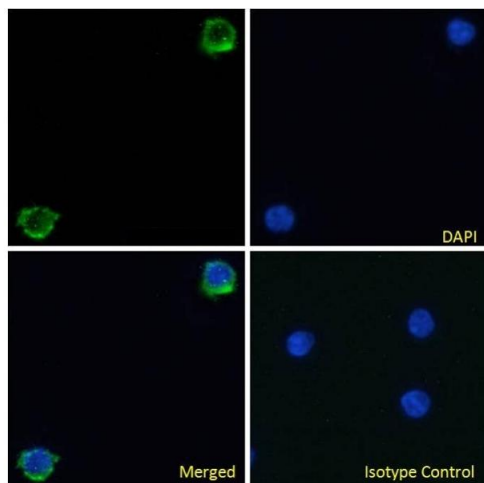
## Application Details

Application Notes:	Optimal working dilution should be determined by the investigator.
Comment:	This chimeric rabbit antibody was made using the variable domain sequences of the original Rat IgG2a format, for improved compatibility with existing reagents, assays and techniques.
Restrictions:	For Research Use only

## Handling

Buffer:	PBS with 0.02 % Proclin 300.
Preservative:	ProClin
Precaution of Use:	This product contains ProClin: a POISONOUS AND HAZARDOUS SUBSTANCE which should be handled by trained staff only.
Storage:	4 °C,-20 °C
Storage Comment:	Store at 4°C for up to 3 months. For longer storage, aliquot and store at -20°C.

## Images



### Immunofluorescence

**Image 1.** Immunofluorescence staining of fixed human peripheral blood monocytes (PBMs) with anti-Integrin beta-7 antibody FIB504. Immunofluorescence analysis of paraformaldehyde fixed human PBMs on Shi-fix™ coverslips, permeabilized with 0.15 % Triton and stained with the chimeric rabbit IgG version of FIB504 (ABIN7072353) at 10 µg/mL for 1h followed by Alexa Fluor®488 secondary antibody (1 µg/mL), showing membrane staining. The

nuclear stain is DAPI (blue). Panels show from left-right, top-bottom ABIN7072353, DAPI, merged channels and an isotype control. The isotype control was stained with an anti-Fluorescein antibody followed by Alexa Fluor®488 secondary antibody.