

Datasheet for ABIN7072360

Recombinant anti-TNFSF18 antibody[Go to Product page](#)**1** Image

Overview

Quantity:	200 µg
Target:	TNFSF18
Reactivity:	Mouse
Host:	Rabbit
Antibody Type:	Recombinant Antibody
Clonality:	Chimeric
Conjugate:	This TNFSF18 antibody is un-conjugated
Application:	ELISA, Flow Cytometry (FACS)

Product Details

Immunogen:	Recombinant protein injected into DA rats.
Clone:	YGL386
Isotype:	IgG kappa
Characteristics:	Original Species of Ab: Rat Original Format of Ab: IgG1
Purification:	Purified antibody.

Target Details

Target:	TNFSF18
Alternative Name:	GITRL (TNFSF18 Products)

Target Details

Background:	TNFSF18L, CD357L,AITRL, TL6, TNLG2A, tumor necrosis factor superfamily member 18, TNF superfamily member 18Glucocorticoid-induced tumour necrosis factor receptor Ligand
-------------	--

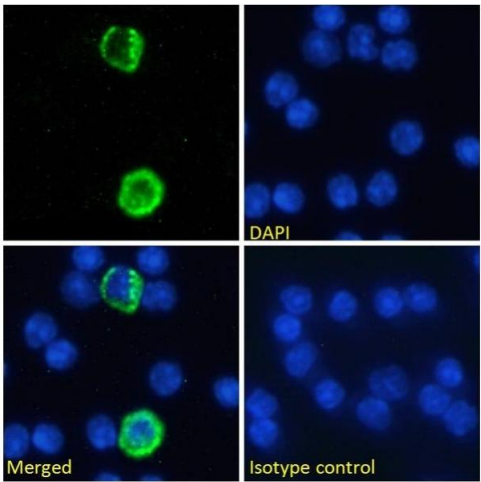
Application Details

Application Notes:	Optimal working dilution should be determined by the investigator.
Comment:	This chimeric rabbit antibody was made using the variable domain sequences of the original Rat IgG1 format, for improved compatibility with existing reagents, assays and techniques.
Restrictions:	For Research Use only

Handling

Buffer:	PBS with 0.02 % Proclin 300.
Preservative:	ProClin
Precaution of Use:	This product contains ProClin: a POISONOUS AND HAZARDOUS SUBSTANCE which should be handled by trained staff only.
Storage:	4 °C,-20 °C
Storage Comment:	Store at 4°C for up to 3 months. For longer storage, aliquot and store at -20°C.

Images



Immunofluorescence

Image 1. Immunofluorescence staining of fixed mouse splenocytes with anti-GITRL (Tumor necrosis factor ligand superfamily member 18) antibody YGL386. Immunofluorescence analysis of paraformaldehyde fixed mouse (*Mus musculus*) splenocytes on Shi-fix™ coverslips, permeabilized with 0.15 % Triton stained with the chimeric rabbit version of YGL386 (ABIN7072360) at 10 µg/mL for 1h followed by Alexa Fluor®488 secondary antibody (1 µg/mL), showing membrane and some cytoplasmic staining in a subset of cells. The nuclear stain is DAPI (blue). Panels show from left-right, top-bottom ABIN7072360, DAPI, merged channels and an isotype control. The isotype

control was stained with an anti-Fluorescein antibody followed by Alexa Fluor®488 secondary antibody.