

Datasheet for ABIN7072380

Recombinant anti-beta Amyloid antibody**2** Images[Go to Product page](#)

Overview

Quantity:	200 µg
Target:	beta Amyloid (Abeta)
Reactivity:	Human
Host:	Rabbit
Antibody Type:	Recombinant Antibody
Clonality:	Chimeric
Conjugate:	This beta Amyloid antibody is un-conjugated
Application:	Western Blotting (WB), ELISA, Immunohistochemistry (IHC), Immunoprecipitation (IP), Immunoelectron Microscopy (IEM)

Product Details

Immunogen:	Amyloid-beta peptide.
Clone:	6E10
Isotype:	IgG kappa
Characteristics:	Original Species of Ab: Mouse Original Format of Ab: IgG1
Purification:	Purified antibody.

Target Details

Target:	beta Amyloid (Abeta)
---------	----------------------

Target Details

Alternative Name:	amyloid beta (Abeta Products)
Background:	Amyloid beta-peptide, A-beta
UniProt:	P05067
Pathways:	Inflammasome

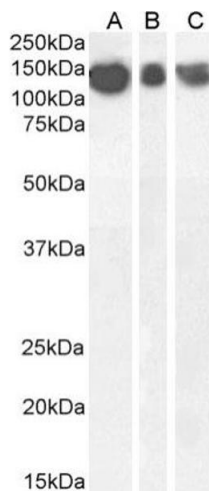
Application Details

Application Notes:	Optimal working dilution should be determined by the investigator.
Comment:	This chimeric rabbit antibody was made using the variable domain sequences of the original Mouse IgG1 format, for improved compatibility with existing reagents, assays and techniques.
Restrictions:	For Research Use only

Handling

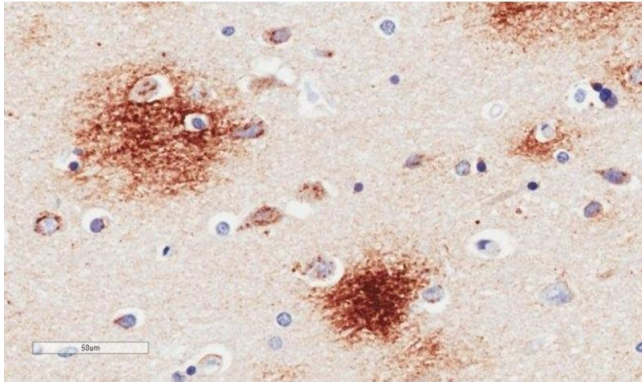
Buffer:	PBS with 0.02 % Proclin 300.
Preservative:	ProClin
Precaution of Use:	This product contains ProClin: a POISONOUS AND HAZARDOUS SUBSTANCE which should be handled by trained staff only.
Storage:	4 °C, -20 °C
Storage Comment:	Store at 4°C for up to 3 months. For longer storage, aliquot and store at -20°C.

Images



Western Blotting

Image 1. Western Blot using anti-Amyloid beta antibody 6E10. Human brain cerebral cortex (A), frontal cortex (B) and cerebellum (C) lysate samples (35 µg protein in RIPA buffer) were resolved on a 10 % SDS PAGE gel and blots probed with the chimeric rabbit version of 6E10 (ABIN7072380) at 0.3 µg/mL before detection using an anti-rabbit secondary antibody. A primary incubation of 1h was used and protein was detected by chemiluminescence. The expected band size for Amyloid beta is ~35 kDa, though this



protein is known to form SDS-resistant low-molecular weight oligomers as seen in this blot (i.e. dimers, c.f. Kumar et al. PMID: 21527912). ABIN7072380 successfully detected aggregate human Amyloid beta in human brain cerebral cortex, frontal cortex and cerebellum lysate samples.

Immunohistochemistry

Image 2. Immunohistochemical staining of human Alzheimer's disease hippocampus tissue using anti-Amyloid Beta antibody. 6E10 Anti-Amyloid Beta staining of paraffin embedded human hippocampus affected by Alzheimer's disease using the rabbit-chimeric version of 6E10 (ABIN7072380). Antigen retrieval was achieved by microwaving in citrate buffer (pH 6), followed by blocking with protein block serum-free buffer (Dako, cat. #X0909). Primary antibody incubation with ABIN7072380 was carried out at 4 μg/mL for 30 minutes. Samples were then incubated with an anti-rabbit IgG HRP secondary antibody (Dako cat#K4009) for 20 mins followed by DAB (3,3'-diaminobenzidine), and counter-staining with haematoxylin. Staining of amyloid plaques in the parahippocampal gyrus may be observed. Recommended concentration, 2-4 μg/mL.