



Datasheet for ABIN7072382

Recombinant anti-CCR4 (Mogamulizumab Biosimilar) antibody



[Go to Product page](#)

1 Image

Overview

| | |
|----------------|--|
| Quantity: | 200 µg |
| Target: | CCR4 (Mogamulizumab Biosimilar) |
| Reactivity: | Human |
| Host: | Rabbit |
| Antibody Type: | Recombinant Antibody |
| Clonality: | Monoclonal |
| Conjugate: | This CCR4 (Mogamulizumab Biosimilar) antibody is un-conjugated |
| Application: | Depletion (Dep) |

Product Details

| | |
|------------------|--|
| Immunogen: | This antibody was prepared by humanization of a mouse anti-CCR4 mAb. |
| Clone: | KW-0761 |
| Isotype: | IgG kappa |
| Characteristics: | Original Species of Ab: Human Original Format of Ab: IgG1 |
| Purification: | Purified antibody. |

Target Details

| | |
|-----------|--|
| Target: | CCR4 (Mogamulizumab Biosimilar) |
| Abstract: | CCR4 (Mogamulizumab Biosimilar) Products |

Target Details

| | |
|--------------|---------------------------------|
| Target Type: | Biosimilar |
| Background: | CD194, CKR-4, CCR-4, CCR4, K5-5 |
| UniProt: | P51679 |

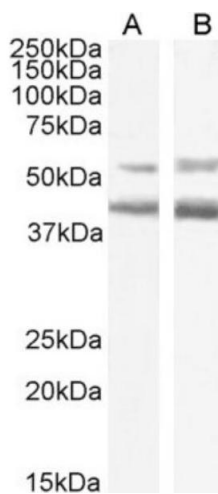
Application Details

| | |
|--------------------|---|
| Application Notes: | Optimal working dilution should be determined by the investigator. |
| Comment: | This chimeric rabbit antibody was made using the variable domain sequences of the original Human IgG1 format, for improved compatibility with existing reagents, assays and techniques. |
| Restrictions: | For Research Use only |

Handling

| | |
|--------------------|---|
| Buffer: | PBS with 0.02 % Proclin 300. |
| Preservative: | ProClin |
| Precaution of Use: | This product contains ProClin: a POISONOUS AND HAZARDOUS SUBSTANCE which should be handled by trained staff only. |
| Storage: | 4 °C,-20 °C |
| Storage Comment: | Store at 4°C for up to 3 months. For longer storage, aliquot and store at -20°C. |

Images



Western Blotting

Image 1. Western Blot using anti-CCR4 antibody KW-0761 (Mogamulizumab). Human brain cerebellum (A) and human heart (B) lysates (35 µg protein in RIPA buffer) were resolved on a 10 % SDS PAGE gel and blots probed with the chimeric rabbit IgG version of KW-0761 (ABIN7072382) at 2 µg/mL before detection using an anti-rabbit secondary antibody. A primary incubation of 1h was used and protein was detected by chemiluminescence. The expected running size for CCR4 is 37.7 kDa.