

Datasheet for ABIN7072422

Recombinant anti-MHC Class II antibody[Go to Product page](#)**1** Image

Overview

Quantity:	200 µg
Target:	MHC Class II (MHC2)
Reactivity:	Mouse, Rat
Host:	Rabbit
Antibody Type:	Recombinant Antibody
Clonality:	Chimeric
Conjugate:	This MHC Class II antibody is un-conjugated
Application:	Flow Cytometry (FACS), Immunohistochemistry (IHC), Immunoprecipitation (IP)

Product Details

Immunogen:	This antibody was raised by immunising DA rats with PVG.R8 rat spleen cells. Splenocytes from immunised rats were then isolated, and fused to the myeloma line NSO/u to generate stable hybridomas.
Clone:	P7-7
Isotype:	IgG kappa
Characteristics:	Original Species of Ab: Rat Original Format of Ab: IgG2b
Purification:	Purified antibody.

Target Details

Target:	MHC Class II (MHC2)
---------	---------------------

Target Details

Alternative Name:	MHC II (MHC2 Products)
Background:	P7.7, I-A, Ia, I-E, MHC-II, MHC Class II

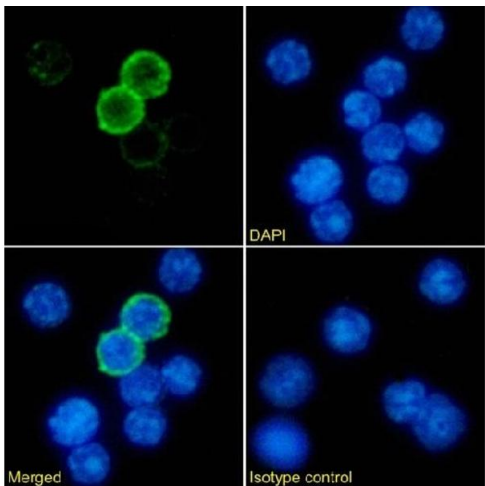
Application Details

Application Notes:	Optimal working dilution should be determined by the investigator.
Comment:	This chimeric rabbit antibody was made using the variable domain sequences of the original Rat IgG2b format, for improved compatibility with existing reagents, assays and techniques.
Restrictions:	For Research Use only

Handling

Buffer:	PBS with 0.02 % Proclin 300.
Preservative:	ProClin
Precaution of Use:	This product contains ProClin: a POISONOUS AND HAZARDOUS SUBSTANCE which should be handled by trained staff only.
Storage:	4 °C,-20 °C
Storage Comment:	Store at 4°C for up to 3 months. For longer storage, aliquot and store at -20°C.

Images



Immunofluorescence

Image 1. Immunofluorescence staining of mouse splenocytes using anti-MHC II antibody P7/7. Immunofluorescence analysis of paraformaldehyde fixed mouse splenocytes immobilized on Shi-fix™ cover-slips and stained with the chimeric rabbit IgG version of P7/7 (ABIN7072422) at 10 µg/mL followed by Alexa Fluor® 488 secondary antibody (2 µg/mL), showing membrane staining in a subset of cells. The nuclear stain is DAPI (blue). Panels show from left-right, top-bottom ABIN7072422, DAPI, merged channels and an isotype control. The isotype control was stained with anti-Fluorescein antibody (ABIN5668035) followed by Alexa Fluor® 488 secondary

antibody.