



[Go to Product page](#)

Datasheet for ABIN7072424

Recombinant anti-MHC, Class I antibody

1 Image

Overview

Quantity:	200 µg
Target:	MHC, Class I
Reactivity:	Mouse
Host:	Rabbit
Antibody Type:	Recombinant Antibody
Clonality:	Chimeric
Conjugate:	This MHC, Class I antibody is un-conjugated
Application:	Immunoprecipitation (IP), Immunofluorescence (IF), Radioimmunoassay (RIA)

Product Details

Immunogen:	This antibody was raised by immunising Lewis 1F rats with mouse CH-1 lymphoma cells. Spleen cells from immunised rats were fused with X-63Ag8-653 myeloma cells to generate hybridomas.
Clone:	R1-9-6
Isotype:	IgG kappa
Characteristics:	Original Species of Ab: Rat Original Format of Ab: IgG2a
Purification:	Purified antibody.

Target Details

Target:	MHC, Class I
---------	--------------

Target Details

Alternative Name: MHC I ([MHC, Class I Products](#))

Background: R1.9.6, H-2, MHC-I, MHC Class I

Application Details

Application Notes: Optimal working dilution should be determined by the investigator.

Comment: This chimeric rabbit antibody was made using the variable domain sequences of the original format, for improved compatibility with existing reagents, assays and techniques.

Restrictions: For Research Use only

Handling

Buffer: PBS with 0.02 % Proclin 300.

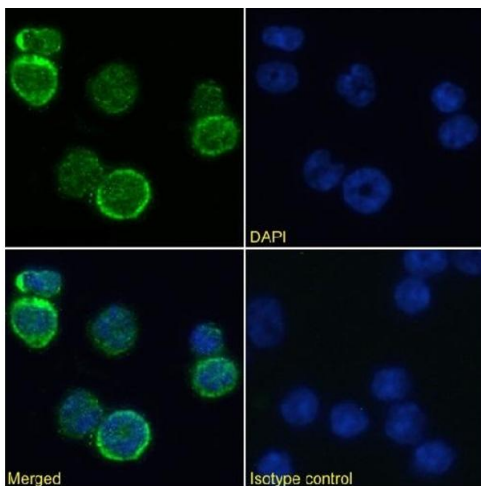
Preservative: ProClin

Precaution of Use: This product contains ProClin: a POISONOUS AND HAZARDOUS SUBSTANCE which should be handled by trained staff only.

Storage: 4 °C, -20 °C

Storage Comment: Store at 4°C for up to 3 months. For longer storage, aliquot and store at -20°C.

Images



Immunofluorescence

Image 1. Immunofluorescence staining of mouse splenocytes using anti-MHC I antibody R1-9.6. Immunofluorescence analysis of paraformaldehyde fixed mouse splenocytes immobilized on Shi-fix™ cover-slips and stained with the chimeric rabbit IgG version of R1-9.6 (ABIN7072424) at 10 µg/mL followed by Alexa Fluor® 488 secondary antibody (2 µg/mL), showing membrane staining in a subset of cells. The nuclear stain is DAPI (blue). Panels show from left-right, top-bottom ABIN7072424, DAPI, merged channels and an isotype control. The isotype control was stained with anti-Fluorescein antibody (ABIN5668035) followed by Alexa Fluor® 488 secondary

antibody.