

Datasheet for ABIN7072426

Recombinant anti-MHC, Class I antibody**2** Images[Go to Product page](#)

Overview

Quantity:	200 µg
Target:	MHC, Class I
Reactivity:	Mouse
Host:	Rabbit
Antibody Type:	Recombinant Antibody
Clonality:	Chimeric
Conjugate:	This MHC, Class I antibody is un-conjugated
Application:	Immunohistochemistry (IHC), Immunoprecipitation (IP), Radioimmunoassay (RIA)

Product Details

Immunogen:	This antibody was raised by immunising Lewis 1F rats with mouse CH-1 lymphoma cells. Spleen cells from immunised rats were fused with X-63Ag8-653 myeloma cells to generate hybridomas.
Clone:	R1-21-2
Isotype:	IgG kappa
Characteristics:	Original Species of Ab: Rat Original Format of Ab: IgG2b
Purification:	Purified antibody.

Target Details

Target:	MHC, Class I
---------	--------------

Target Details

Alternative Name:	MHC I (MHC, Class I Products)
Background:	R1.21.2, H-2, MHC-I, MHC Class I

Application Details

Application Notes:	Optimal working dilution should be determined by the investigator.
Comment:	This chimeric rabbit antibody was made using the variable domain sequences of the original format, for improved compatibility with existing reagents, assays and techniques.
Restrictions:	For Research Use only

Handling

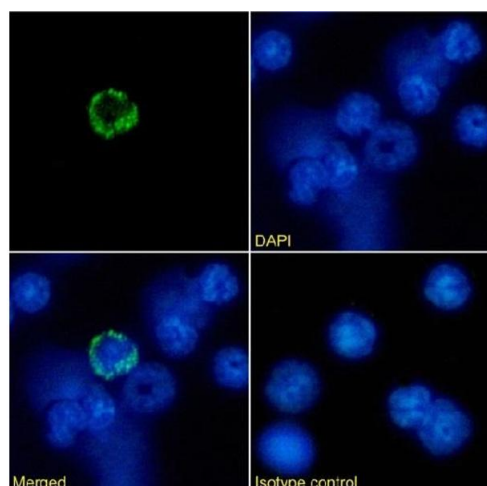
Buffer:	PBS with 0.02 % Proclin 300.
Preservative:	ProClin
Precaution of Use:	This product contains ProClin: a POISONOUS AND HAZARDOUS SUBSTANCE which should be handled by trained staff only.
Storage:	4 °C, -20 °C
Storage Comment:	Store at 4°C for up to 3 months. For longer storage, aliquot and store at -20°C.

Images



Western Blotting

Image 1. Western Blot using anti-MHC I antibody R1-21.2. Mouse thymus tissue lysate (35 µg protein in RIPA buffer) was resolved on a SDS PAGE gel and blots were probed with the chimeric rabbit version of R1-21.2 (ABIN7072426) at 1 µg/mL before detection using an anti-rabbit secondary antibody. A primary incubation of 1h was used and protein was detected by chemiluminescence.



Immunofluorescence

Image 2. Immunofluorescence staining of mouse splenocytes using anti-MHC I antibody R1-21.2. Immunofluorescence analysis of paraformaldehyde fixed mouse splenocytes immobilized on Shi-fix™ cover-slips and stained with the chimeric rabbit IgG version of R1-21.2 (ABIN7072426) at 10 µg/mL followed by Alexa Fluor® 488 secondary antibody (2 µg/mL), showing membrane staining in a subset of cells. The nuclear stain is DAPI (blue). Panels show from left-right, top-bottom ABIN7072426, DAPI, merged channels and an isotype control. The isotype control was stained with anti-Fluorescein antibody (ABIN5668035) followed by Alexa Fluor® 488 secondary antibody.