

Datasheet for ABIN7072432

Recombinant anti-PDCD1LG2 antibody



[Go to Product page](#)

1 Image

Overview

Quantity:	200 µg
Target:	PDCD1LG2
Reactivity:	Mouse
Host:	Rabbit
Antibody Type:	Recombinant Antibody
Clonality:	Chimeric
Conjugate:	This PDCD1LG2 antibody is un-conjugated
Application:	Western Blotting (WB), Flow Cytometry (FACS), Immunoprecipitation (IP), Blocking Reagent (BR)

Product Details

Purpose:	Anti-PD-L2 [TY25], Rabbit IgG, kappa
Immunogen:	This antibody was raised by immunising SD rats with B7-DC-transfected RAW264.7 cells and selected on B7-DC-transfected NRK.
Clone:	TY25
Isotype:	IgG kappa
Specificity:	This antibody binds to mouse PD-L2 and competes with PD-1 binding. It does not cross-react with PD-L1.
Characteristics:	Original Species of Ab: Rat Original Format of Ab: IgG2a

Product Details

Purification: Protein A affinity purified

Target Details

Target: PDCD1LG2

Alternative Name: PD-L2 ([PDCD1LG2 Products](#))

Background: CD273, B7-DC, PDL2, B7DC, programmed death ligand 2, CD273, Pdccl1g2

UniProt: [Q9WUL5](#)

Application Details

Application Notes: This antibody has been used to detect murine PD-L2 by flow cytometry on stimulated dendritic cells as well as various mouse tumour cells. It also detects immunoprecipitates mouse PD-L2 and can be used to detect it by non-reducing Western Blot. TY25 inhibits PD-L2 binding to PD-1 transfected cells (Ansari et al. 2003, PMID: 12847137) and thereby blocks PD-L2 : PD-1 signalling.

Comment: This chimeric rabbit antibody was made using the variable domain sequences of the original Rat IgG2a format, for improved compatibility with existing reagents, assays and techniques.

Restrictions: For Research Use only

Handling

Concentration: 1 mg/mL

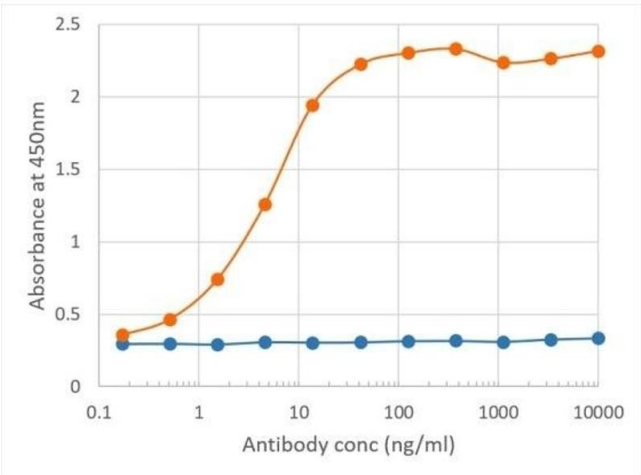
Buffer: PBS with 0.02 % Proclin 300.

Preservative: ProClin

Precaution of Use: This product contains ProClin: a POISONOUS AND HAZARDOUS SUBSTANCE which should be handled by trained staff only.

Storage: 4 °C, -20 °C

Storage Comment: Store at 4°C for up to 3 months. For longer storage, aliquot and store at -20°C.



ELISA

Image 1. Binding curve of anti-PDL2 antibody TY25 (ABIN7072432) to mouse PDL2-Fc fusion protein ELISA Plate coated with mouse PDL2-Fc fusion protein (Pr00156-1.9) at a concentration of 5 µg/mL. A 3-fold serial dilution from 10,000 to 0.1 ng/mL was performed using ABIN7072432. For detection, a 1:4000 dilution of HRP-labelled goat anti-rabbit antibody (Bio-Rad) was used.