

Datasheet for ABIN7072434

**Recombinant anti-CD276 antibody (Extracellular Domain)**[Go to Product page](#)**2** Images

## Overview

Quantity:	200 µg
Target:	CD276
Binding Specificity:	AA 1-242, Extracellular Domain
Reactivity:	Mouse
Host:	Rabbit
Antibody Type:	Recombinant Antibody
Clonality:	Chimeric
Conjugate:	This CD276 antibody is un-conjugated
Application:	Flow Cytometry (FACS), Blocking Reagent (BR)

## Product Details

Immunogen:	This antibody was generated by immunizing Sprague Dawley rats with B7-H3-Ig, consisting of the extracellular domain (aa1-242 of mouse B7-H3) linked to the Fc portion of mouse IgG2a, emulsified in CFA (Difco). The antibody was selected by its reactivity to mouse B7-H3-transfected cells, but not to parental cells by flow cytometry.
Clone:	MJ18
Isotype:	IgG kappa
Characteristics:	Original Species of Ab: Rat Original Format of Ab: IgG1
Purification:	Purified antibody.

## Target Details

Target:	CD276
Alternative Name:	B7-H3 ( <a href="#">CD276 Products</a> )
Background:	CD276, B7H3
UniProt:	<a href="#">Q8VE98</a>
Pathways:	<a href="#">Cancer Immune Checkpoints</a>

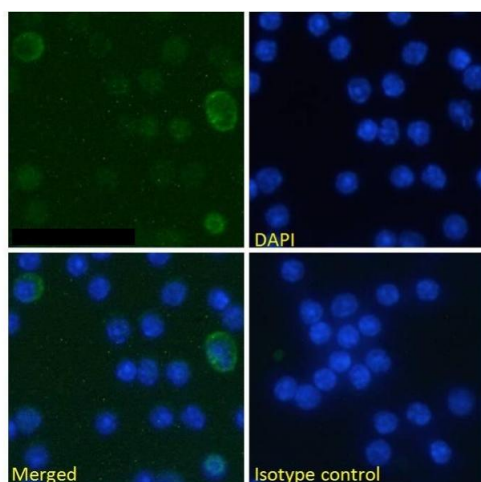
## Application Details

Application Notes:	Optimal working dilution should be determined by the investigator.
Comment:	This chimeric rabbit antibody was made using the variable domain sequences of the original Rat IgG1 format, for improved compatibility with existing reagents, assays and techniques.
Restrictions:	For Research Use only

## Handling

Buffer:	PBS with 0.02 % Proclin 300.
Preservative:	ProClin
Precaution of Use:	This product contains ProClin: a POISONOUS AND HAZARDOUS SUBSTANCE which should be handled by trained staff only.
Storage:	4 °C, -20 °C
Storage Comment:	Store at 4°C for up to 3 months. For longer storage, aliquot and store at -20°C.

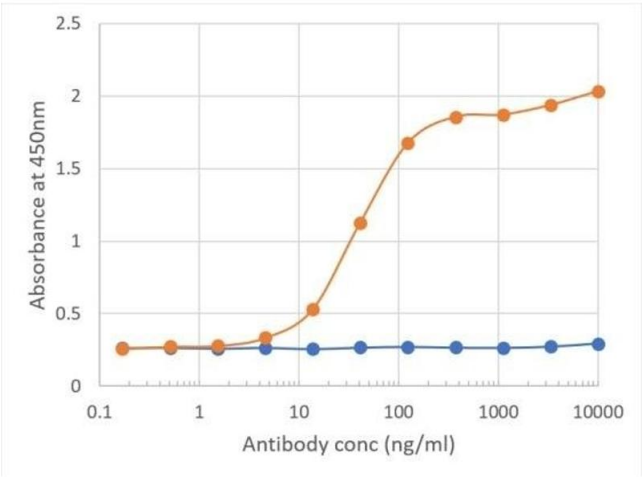
## Images



### Immunofluorescence

**Image 1.** Immunofluorescence staining of fixed mouse splenocytes with anti-B7-H3 (CD276) antibody MJ18. Immunofluorescence analysis of paraformaldehyde fixed mouse (*Mus musculus*) splenocytes on Shi-fix™ coverslips, permeabilized with 0.15 % Triton stained with the chimeric rabbit version of MJ18 (ABIN7072434) at 10 µg/mL for 1h followed by Alexa Fluor®488 secondary antibody (1 µg/mL), showing weak membrane staining of a subset of cells. The

nuclear stain is DAPI (blue). Panels show from left-right, top-bottom ABIN7072434, DAPI, merged channels and an isotype control. The isotype control was stained with an anti-Fluorescein antibody followed by Alexa Fluor@488 secondary antibody



ELISA

**Image 2.** Binding curve of anti-B7-H3 antibody MJ18 (ABIN7072434) to mouse B7-H3-Fc fusion protein ELISA Plate coated with mouse B7-H3-Fc fusion protein (Pr00158-1.9) at a concentration of 5 µg/mL. A 3-fold serial dilution from 10,000 to 0.1 ng/mL was performed using ABIN7072434. For detection, a 1:4000 dilution of HRP-labelled goat anti-rabbit antibody (Bio-Rad) was used.