

Datasheet for ABIN7072449

Recombinant anti-CLEC4A antibody[Go to Product page](#)**1** Image

Overview

Quantity:	200 µg
Target:	CLEC4A
Reactivity:	Human
Host:	Rabbit
Antibody Type:	Recombinant Antibody
Clonality:	Chimeric
Conjugate:	This CLEC4A antibody is un-conjugated
Application:	Flow Cytometry (FACS)

Product Details

Immunogen:	This antibody was raised by immunising BALB/c mice with a dendritic cell immunoreceptor ectodomain-human Fc fusion protein.
Clone:	9E8
Isotype:	IgG kappa
Characteristics:	Original Species of Ab: Mouse Original Format of Ab: IgG1
Purification:	Purified antibody.

Target Details

Target:	CLEC4A
---------	--------

Target Details

Alternative Name:	DCIR (CLEC4A Products)
Background:	CD367, Clec4A, C-type lectin domain family 4 member A, LLIR, CLECSF6, C-type lectin DDB27, C-type lectin superfamily member 6, Dendritic cell immunoreceptor, Lectin-like immunoreceptor

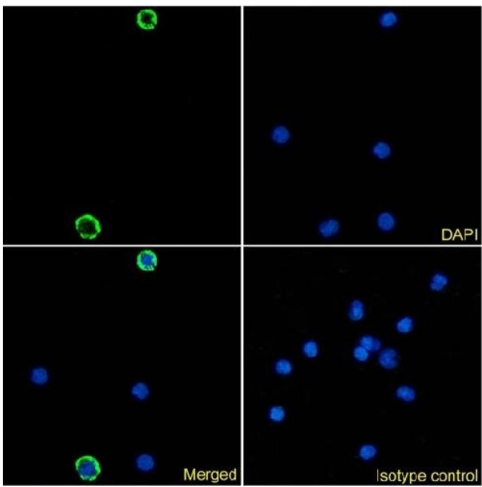
Application Details

Application Notes:	Optimal working dilution should be determined by the investigator.
Comment:	This chimeric rabbit antibody was made using the variable domain sequences of the original Mouse IgG1 format, for improved compatibility with existing reagents, assays and techniques.
Restrictions:	For Research Use only

Handling

Buffer:	PBS with 0.02 % Proclin 300.
Preservative:	ProClin
Precaution of Use:	This product contains ProClin: a POISONOUS AND HAZARDOUS SUBSTANCE which should be handled by trained staff only.
Storage:	4 °C,-20 °C
Storage Comment:	Store at 4°C for up to 3 months. For longer storage, aliquot and store at -20°C.

Images



Immunofluorescence

Image 1. Immunofluorescence staining of human peripheral blood monocytes using anti-DCIR antibody 9E8. Immunofluorescence analysis of paraformaldehyde fixed human peripheral blood monocytes immobilized on Shi-fix™ cover-slips and stained with the chimeric rabbit IgG version of 9E8 (ABIN7072449) at 10 µg/mL followed by Alexa Fluor® 488 secondary antibody (2 µg/mL), showing membrane staining in a subset of cells. The nuclear stain is DAPI (blue). Panels show from left-right, top-bottom ABIN7072449, DAPI, merged channels and an isotype control. The isotype control was stained with anti-

Fluorescein antibody (ABIN5668035) followed by Alexa Fluor® 488 secondary antibody.