



[Go to Product page](#)

Datasheet for ABIN7072464

## Recombinant anti-VISTA antibody

### 2 Images

#### Overview

Quantity:	200 µg
Target:	VISTA
Reactivity:	Mouse
Host:	Rabbit
Antibody Type:	Recombinant Antibody
Clonality:	Chimeric
Conjugate:	This VISTA antibody is un-conjugated
Application:	ELISA, Immunohistochemistry (IHC), Blocking Reagent (BR)

#### Product Details

Immunogen:	The antibody was generated by immunising Armenian hamsters with mPD-1HIg.
Clone:	MH5A
Isotype:	IgG lambda
Characteristics:	Original Species of Ab: Hamster, Armenian Original Format of Ab: IgG
Purification:	Purified antibody.

#### Target Details

Target:	VISTA
Alternative Name:	PD-1H ( <a href="#">VISTA Products</a> )

## Target Details

Background:	VISTA, VISR, B7-H5, B7H5, GI24, PP2135, SISP1, DD1alpha, C10orf54, chromosome 10 open reading frame 54, V-set immunoregulatory receptor
UniProt:	<a href="#">Q9D659</a>
Pathways:	<a href="#">Cancer Immune Checkpoints</a>

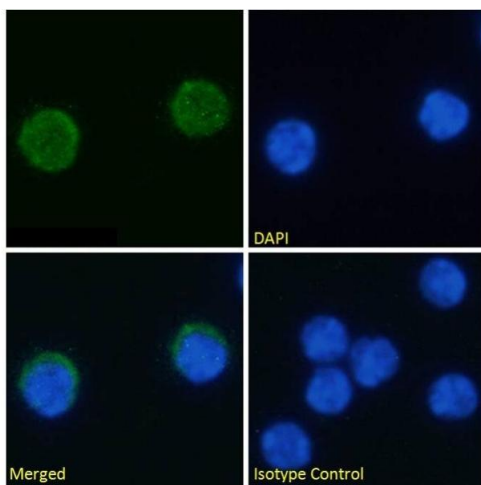
## Application Details

Application Notes:	Optimal working dilution should be determined by the investigator.
Comment:	This chimeric rabbit antibody was made using the variable domain sequences of the original Hamster IgG format, for improved compatibility with existing reagents, assays and techniques.
Restrictions:	For Research Use only

## Handling

Buffer:	PBS with 0.02 % Proclin 300.
Preservative:	ProClin
Precaution of Use:	This product contains ProClin: a POISONOUS AND HAZARDOUS SUBSTANCE which should be handled by trained staff only.
Storage:	4 °C, -20 °C
Storage Comment:	Store at 4°C for up to 3 months. For longer storage, aliquot and store at -20°C.

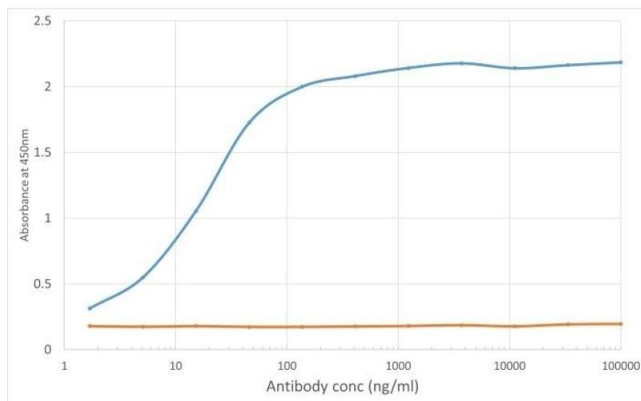
## Images



### Immunofluorescence

**Image 1.** Immunofluorescence staining of fixed mouse splenocytes with anti-PD-1H antibody MH5A. Immunofluorescence analysis of paraformaldehyde fixed mouse splenocytes permeabilized with 0.15 % Triton and stained with the chimeric mouse IgG1 version of MH5A (ABIN7072464) at 10 µg/mL for 1h followed by Alexa Fluor®488 secondary antibody (2 µg/mL), showing membrane staining. The nuclear stain is DAPI (blue). Panels show from left-right, top-bottom ABIN7072464, DAPI, merged channels and an isotype control. The isotype

control was stained with an anti-unknown specificity antibody followed by Alexa Fluor®488 secondary antibody.



## ELISA

**Image 2.** ELISA of anti-VISTA antibody on VISTA-Fc fusion protein. Binding curve of the rabbit chimeric version of the anti-VISTA antibody MH5A (ABIN7072464, blue line) to an ELISA plate coated with mouse VISTA-Fc fusion protein (Pr00164-1.9) at a concentration of 5 µg/mL. A 3-fold serial dilution from 10000 to 1.7 ng/mL was performed using ABIN7072464. For signal detection, a 1:4000 dilution of anti-rabbit IgG1 HRP (BioRad) antibody was used.