

Datasheet for ABIN7072470

Recombinant anti-HVEM antibody**2** Images[Go to Product page](#)

Overview

Quantity:	200 µg
Target:	HVEM (TNFRSF14)
Reactivity:	Mouse
Host:	Rabbit
Antibody Type:	Recombinant Antibody
Clonality:	Chimeric
Conjugate:	This HVEM antibody is un-conjugated
Application:	Western Blotting (WB), Flow Cytometry (FACS), Immunoprecipitation (IP), Blocking Peptide (BP), Functional Studies (Func)

Product Details

Immunogen:	This antibody was raised by immunising Armenian hamsters with mouse HVEM:Fc fusion protein.
Clone:	HMHV-1B18
Isotype:	IgG kappa
Characteristics:	Original Species of Ab: Hamster, Armenian Original Format of Ab: IgG
Purification:	Purified antibody.

Target Details

Target:	HVEM (TNFRSF14)
---------	-----------------

Target Details

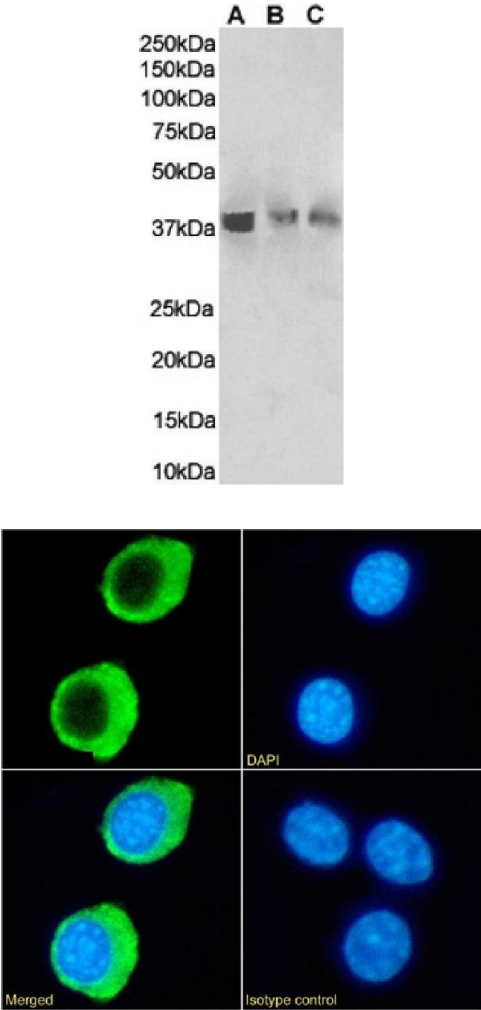
Alternative Name:	HVEM (TNFRSF14 Products)
Target Type:	Viral Protein
Background:	CD270, TNF Receptor-like 2, ATAR, Herpes virus Entry Mediator A, HVEA, Herpes virus Entry Mediator, LIGHTR, Tumor Necrosis Factor Receptor-Like Gene2, Tumor Necrosis Factor Receptor-Like 2, TR2, Tumor Necrosis Factor Receptor Superfamily Member 14, TNFRSF14, CD40-Like Protein
UniProt:	Q71F55
Pathways:	Production of Molecular Mediator of Immune Response , Cancer Immune Checkpoints

Application Details

Application Notes:	Optimal working dilution should be determined by the investigator.
Comment:	This chimeric rabbit antibody was made using the variable domain sequences of the original Hamster IgG format, for improved compatibility with existing reagents, assays and techniques.
Restrictions:	For Research Use only

Handling

Buffer:	PBS with 0.02 % Proclin 300.
Preservative:	ProClin
Precaution of Use:	This product contains ProClin: a POISONOUS AND HAZARDOUS SUBSTANCE which should be handled by trained staff only.
Storage:	4 °C,-20 °C
Storage Comment:	Store at 4°C for up to 3 months. For longer storage, aliquot and store at -20°C.



Western Blotting

Image 1. Western Blot using anti-HVEM antibody HMMHV-1B18. Mouse spleen(A), mouse thymus (B) and mouse lung(C) tissue lysates (35 µg protein in RIPA buffer) were resolved on a SDS PAGE gel and blots were probed with the chimeric rabbit version of HMMHV-1B18 (ABIN7072470) at 0.01 µg/mL, before detection using an anti-rabbit secondary antibody. A primary incubation of 1h was used and protein was detected by chemiluminescence.

Immunofluorescence

Image 2. Immunofluorescence staining of fixed RAW264.7 cells with anti-HVEM antibody HMMHV-1B18. Immunofluorescence analysis of paraformaldehyde fixed RAW264.7 cells on Shi-fix™ coverslips stained with the chimeric rabbit IgG version of HMMHV-1B18 (ABIN7072470) at 10 µg/mL for 1h followed by Alexa Fluor® 488 secondary antibody (2 µg/mL), showing membrane staining. The nuclear stain is DAPI (blue). Panels show from left-right, top-bottom ABIN7072470, DAPI, merged channels and an isotype control. The isotype control was an unknown specificity antibody (ABIN5668079) followed by staining with Alexa Fluor® 488 secondary antibody.