

Datasheet for ABIN7072481

**Recombinant anti-HAVCR1 antibody****2** Images[Go to Product page](#)

## Overview

Quantity:	200 µg
Target:	HAVCR1
Reactivity:	Mouse
Host:	Rabbit
Antibody Type:	Recombinant Antibody
Clonality:	Chimeric
Application:	Immunohistochemistry (IHC), Flow Cytometry (FACS), Immunofluorescence (IF), Agonist (Agon)

## Product Details

Immunogen:	This antibody was raised by immunising female Lewis strain rats (Harlan Sprague-Dawley) subcutaneously with mouse TIM-1-Ig in complete Freund's adjuvant (CFA), followed by multiple 'boosting' with mouse TIM-1-Ig in PBS.
Clone:	3B3
Isotype:	IgG kappa
Characteristics:	Original Species of Ab: Rat Original Format of Ab: IgG2a
Purification:	Purified antibody.

## Target Details

Target:	HAVCR1
---------	--------

## Target Details

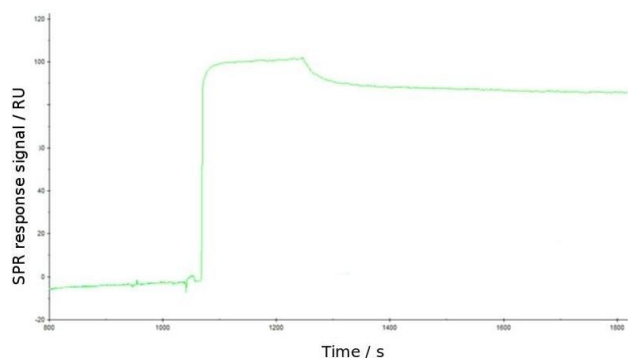
Alternative Name:	Tim-1 ( <a href="#">HAVCR1 Products</a> )
Target Type:	Virus
Background:	CD365, HAVcr-1, HAVCR1, Hepatitis A virus cellular receptor 1 homolog, Kidney injury molecule 1, KIM-1, T cell immunoglobulin and mucin domain-containing protein 1, T cell membrane protein 1, T-cell immunoglobulin and mucin domain containing 1, T-cell immunoglobulin mucin receptor 1, TIM-1, TIM1, TIMD-1
UniProt:	<a href="#">Q5QNS5</a>

## Application Details

Application Notes:	Optimal working dilution should be determined by the investigator.
Comment:	This chimeric rabbit antibody was made using the variable domain sequences of the original Rat IgG2a format, for improved compatibility with existing reagents, assays and techniques.
Restrictions:	For Research Use only

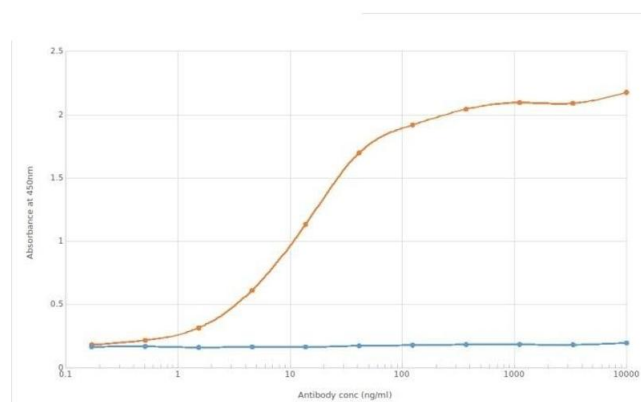
## Handling

Buffer:	PBS with 0.02 % Proclin 300.
Preservative:	ProClin
Precaution of Use:	This product contains ProClin: a POISONOUS AND HAZARDOUS SUBSTANCE which should be handled by trained staff only.
Storage:	4 °C, -20 °C
Storage Comment:	Store at 4°C for up to 3 months. For longer storage, aliquot and store at -20°C.



### Surface Plasmon Resonance

**Image 1.** Surface plasmon resonance (SPR) sensorgram anti-TIM-1 3B3 binding to TIM-1 Fc-fusion protein. Binding of mouse TIM-1 Fc-fusion protein (Pr00227-1.9) to immobilised the rabbit IgG chimeric version of 3B3 (ABIN7072481). Pr00227-1.9 was injected and allowed to associate with ABIN7072481 between 1080s and 1250s, before a dissociation phase between 1250s and 1800s. Pr00227-1.9 showed rapid binding to ABIN7072481 and following ligand removal remained strongly bound. This suggests that ABIN7072481 has a very high affinity for Pr00227-1.9.



### ELISA

**Image 2.** ELISA of anti-TIM-1 antibody on TIM-1-Fc fusion protein. Binding curves of the rabbit chimeric version of the anti-TIM-1 antibody 3B3 (ABIN7072481, red line) and isotype control (ABIN5668035, anti-Fluorescein, blue line) to an ELISA plate coated with mouse TIM-1-Fc fusion protein (Pr00227-1.9) at a concentration of 5 µg/mL. A 3-fold serial dilution from 10000 to 0.17 ng/mL was performed using ABIN7072481. For signal detection, a 1:4000 dilution of anti-rabbit IgG1 HRP (BioRad) antibody was used.