



[Go to Product page](#)

Datasheet for ABIN7072483

Recombinant anti-CCRL2 antibody (AA 1-24)

2 Images

Overview

Quantity:	200 µg
Target:	CCRL2
Binding Specificity:	AA 1-24
Reactivity:	Mouse
Host:	Rabbit
Antibody Type:	Recombinant Antibody
Clonality:	Chimeric
Conjugate:	This CCRL2 antibody is un-conjugated
Application:	Western Blotting (WB), ELISA, Flow Cytometry (FACS), Immunohistochemistry (IHC), Immunocytochemistry (ICC), Functional Studies (Func), Immunoprecipitation (IP)

Product Details

Immunogen:	This antibody was raised by immunising Wistar Furth rats with the mCCRL2 peptide/KLH conjugate. The immunizing amino-terminal mCCRL2 peptide with the sequence NH ₂ -MDNYTVAPDDEYDVLILDDYLDNSC-COOH, corresponding to residues 1-24 of mCCRL2, with a nonnative carboxyl-terminal cysteine to facilitate conjugation to keyhole limpet hemocyanin (KLH).
Clone:	BZ5B8
Isotype:	IgG kappa
Characteristics:	Original Species of Ab: Rat Original Format of Ab: IgG2a

Product Details

Purification: Purified antibody.

Target Details

Target: CCRL2

Alternative Name: CCRL2 ([CCRL2 Products](#))

Background: CCR11, C-C chemokine receptor-like 2, Chemokine receptor CCR11, CKRX, CRAM-A, CRAM-B, G-protein coupled beta chemokine receptor, L-CCR, Lipopolysaccharide-inducible C-C chemokine receptor

UniProt: [035457](#)

Application Details

Application Notes: Optimal working dilution should be determined by the investigator.

Comment: This chimeric rabbit antibody was made using the variable domain sequences of the original Rat IgG2a format, for improved compatibility with existing reagents, assays and techniques.

Restrictions: For Research Use only

Handling

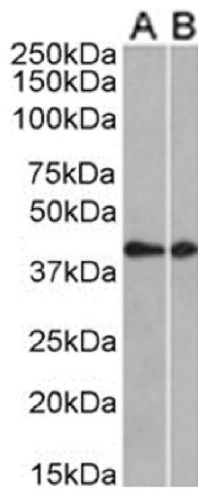
Buffer: PBS with 0.02 % Proclin 300.

Preservative: ProClin

Precaution of Use: This product contains ProClin: a POISONOUS AND HAZARDOUS SUBSTANCE which should be handled by trained staff only.

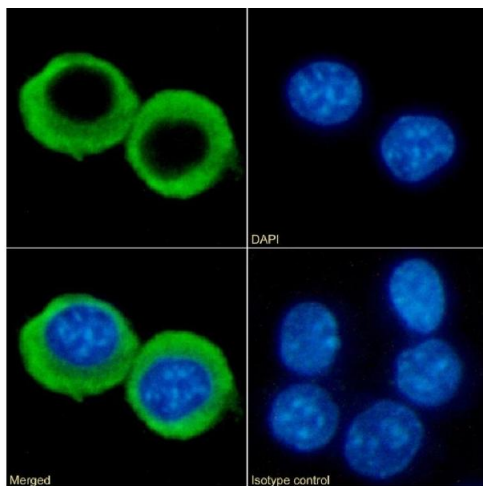
Storage: 4 °C, -20 °C

Storage Comment: Store at 4°C for up to 3 months. For longer storage, aliquot and store at -20°C.



Western Blotting

Image 1. Western Blot using anti-CCRL2 antibody. Mouse thymus (A) and mouse brain (B) tissue lysates (35 μ g protein in RIPA buffer) were resolved on a SDS PAGE gel and blots were probed with the chimeric rabbit version of CCRL2 (ABIN7072483) at 0.5 μ g/mL, before detection using an anti-rabbit secondary antibody. A primary incubation of 1h was used and protein was detected by chemiluminescence.



Immunofluorescence

Image 2. Immunofluorescence staining of fixed RAW264.7 cells with anti-CCRL2 antibody BZ5B8 (B467). Immunofluorescence analysis of paraformaldehyde fixed RAW264.7 cells on Shi-fix™ coverslips stained with the chimeric rabbit IgG version of BZ5B8 (ABIN7072483) at 10 μ g/mL for 1h followed by Alexa Fluor® 488 secondary antibody (2 μ g/mL), showing membrane staining. The nuclear stain is DAPI (blue). Panels show from left-right, top-bottom ABIN7072483, DAPI, merged channels and an isotype control. The isotype control was an unknown specificity antibody (ABIN5668125) followed by staining with Alexa Fluor® 488 secondary antibody.