

Datasheet for ABIN7072487

Recombinant anti-CMKLR1 antibody (AA 8-32)[Go to Product page](#)**1** Image

Overview

Quantity:	200 µg
Target:	CMKLR1
Binding Specificity:	AA 8-32
Reactivity:	Mouse
Host:	Rabbit
Antibody Type:	Recombinant Antibody
Clonality:	Chimeric
Conjugate:	This CMKLR1 antibody is un-conjugated
Application:	Western Blotting (WB), ELISA, Immunohistochemistry (IHC), Immunofluorescence (IF), Flow Cytometry (FACS), Immunoprecipitation (IP), Functional Studies (Func)

Product Details

Immunogen:	This antibody was raised by immunising Wistar Furth rats with the mCMKLR1 peptide/KLH conjugate. The immunizing amino-terminal mCMKLR1 peptide with the sequence NH ₂ -DSGIYDDEYSDGFGYFVDLEEASWC-COOH, corresponding to residues 8-32 of mCMKLR1, with a nonnative carboxyl-terminal cysteine to facilitate conjugation to keyhole limpet hemocyanin (KLH).
Clone:	BZ194
Isotype:	IgG kappa
Characteristics:	Original Species of Ab: Rat Original Format of Ab: IgG2a

Product Details

Purification: Purified antibody.

Target Details

Target: CMKLR1

Alternative Name: CMKLR1 ([CMKLR1 Products](#))

Background: Chemerin receptor, CHEMERINR, chemokine receptor-like 1, Chemokine-like receptor 1, ChemR23, CMKLR1, DEZ, G-protein coupled receptor ChemR23, G-protein coupled receptor DEZ, orphan G-protein coupled receptor, Dez, Resolvin E1 receptor, RVER1, Gpcr27, MGC126105, MGC126106

UniProt: [P97468](#)

Application Details

Application Notes: Optimal working dilution should be determined by the investigator.

Comment: This chimeric rabbit antibody was made using the variable domain sequences of the original Rat IgG2a format, for improved compatibility with existing reagents, assays and techniques.

Restrictions: For Research Use only

Handling

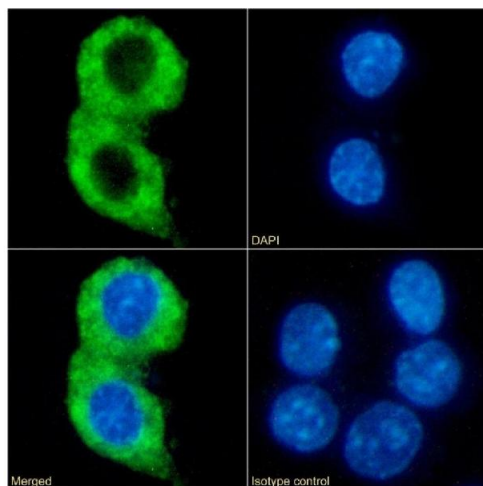
Buffer: PBS with 0.02 % Proclin 300.

Preservative: ProClin

Precaution of Use: This product contains ProClin: a POISONOUS AND HAZARDOUS SUBSTANCE which should be handled by trained staff only.

Storage: 4 °C, -20 °C

Storage Comment: Store at 4°C for up to 3 months. For longer storage, aliquot and store at -20°C.



Immunofluorescence

Image 1. Immunofluorescence staining of fixed RAW264.7 cells with anti-CMKLR1 antibody BZ194. Immunofluorescence analysis of paraformaldehyde fixed RAW264.7 cells on Shi-fix™ coverslips stained with the chimeric rabbit IgG version of BZ194 (ABIN7072487) at 10 µg/mL for 1h followed by Alexa Fluor® 488 secondary antibody (2 µg/mL), showing membrane staining. The nuclear stain is DAPI (blue). Panels show from left-right, top-bottom ABIN7072487, DAPI, merged channels and an isotype control. The isotype control was an unknown specificity antibody (ABIN5668125) followed by staining with Alexa Fluor® 488 secondary antibody.