

Datasheet for ABIN7072499

Recombinant anti-TIMD4 antibody[Go to Product page](#)**1** Image

Overview

Quantity:	200 µg
Target:	TIMD4
Reactivity:	Mouse
Host:	Rabbit
Antibody Type:	Recombinant Antibody
Clonality:	Chimeric
Application:	Western Blotting (WB), ELISA, Flow Cytometry (FACS), Immunofluorescence (IF), Immunohistochemistry (IHC), Blocking Peptide (BP)

Product Details

Immunogen:	This antibody was raised by immunising female Lewis rats (Harlan Sprague-Dawley) with Tim-4:Ig fusion protein in complete Freund's adjuvant.
Clone:	5G3
Isotype:	IgG kappa
Characteristics:	Original Species of Ab: Rat Original Format of Ab: IgG1
Purification:	Purified antibody.

Target Details

Target:	TIMD4
Alternative Name:	Tim-4 (TIMD4 Products)

Target Details

Background:	TIMD4, SMUCKLER, SMUCKLER, TIM4, Spleen, mucin-containing, knockout of lymphotoxin protein, T-cell immunoglobulin and mucin domain containing 4, T-cell immunoglobulin and mucin domain-containing protein 4, T-cell immunoglobulin mucin receptor 4, T-cell membrane protein 4, TIM-4, TIMD-4
UniProt:	Q6U7R4
Pathways:	Cancer Immune Checkpoints

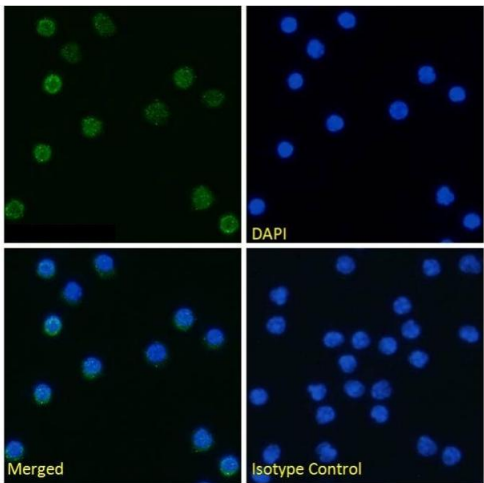
Application Details

Application Notes:	Optimal working dilution should be determined by the investigator.
Comment:	This chimeric rabbit antibody was made using the variable domain sequences of the original Rat IgG1 format, for improved compatibility with existing reagents, assays and techniques.
Restrictions:	For Research Use only

Handling

Buffer:	PBS with 0.02 % Proclin 300.
Preservative:	ProClin
Precaution of Use:	This product contains ProClin: a POISONOUS AND HAZARDOUS SUBSTANCE which should be handled by trained staff only.
Storage:	4 °C,-20 °C
Storage Comment:	Store at 4°C for up to 3 months. For longer storage, aliquot and store at -20°C.

Images



Immunofluorescence

Image 1. Immunofluorescence staining of fixed mouse splenocytes with anti-Tim-4 antibody 5G3. Immunofluorescence analysis of paraformaldehyde fixed mouse splenocytes permeabilized with 0.15 % Triton and stained with the chimeric mouse IgG1 version of 5G3 (ABIN7072499) at 10 µg/mL for 1h followed by Alexa Fluor®488 secondary antibody (2 µg/mL), showing membrane staining. The nuclear stain is DAPI (blue). Panels

show from left-right, top-bottom ABIN7072499, DAPI, merged channels and an isotype control. The isotype control was stained with an anti-unknown specificity antibody followed by Alexa Fluor®488 secondary antibody.