



[Go to Product page](#)

Datasheet for ABIN7072507

## Recombinant anti-Galectin 9 antibody

### 1 Image

#### Overview

Quantity:	200 µg
Target:	Galectin 9 (LGALS9)
Reactivity:	Mouse
Host:	Rabbit
Antibody Type:	Recombinant Antibody
Clonality:	Chimeric
Conjugate:	This Galectin 9 antibody is un-conjugated
Application:	Flow Cytometry (FACS), Blocking Peptide (BP), Functional Studies (Func)

#### Product Details

Immunogen:	This antibody was raised by immunising rats with recombinant mouse galectin-9.
Clone:	RG9-35
Isotype:	IgG kappa
Characteristics:	Original Species of Ab: Rat Original Format of Ab: IgG2a
Purification:	Purified antibody.

#### Target Details

Target:	Galectin 9 (LGALS9)
Alternative Name:	Galectin 9 ( <a href="#">LGALS9 Products</a> )

## Target Details

Background: Ecalectin, Gal-9, galectin 9, Galectin-9, HUAT, lectin, galactose binding, soluble 5, LGALS9A, tumor antigen HOM-HD-21, urate transporter/channel protein.

UniProt: [O08573](#)

## Application Details

Application Notes: Optimal working dilution should be determined by the investigator.

Comment: This chimeric rabbit antibody was made using the variable domain sequences of the original Rat IgG2a format, for improved compatibility with existing reagents, assays and techniques.

Restrictions: For Research Use only

## Handling

Buffer: PBS with 0.02 % Proclin 300.

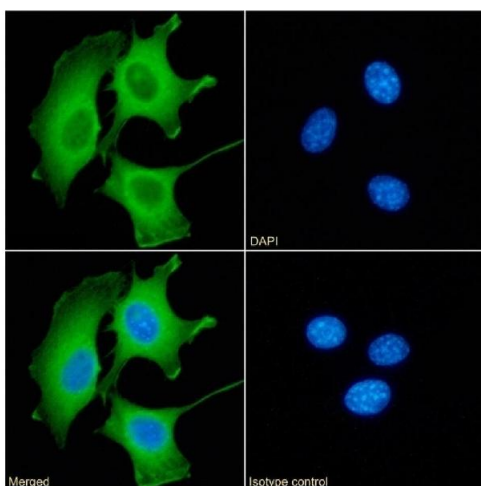
Preservative: ProClin

Precaution of Use: This product contains ProClin: a POISONOUS AND HAZARDOUS SUBSTANCE which should be handled by trained staff only.

Storage: 4 °C, -20 °C

Storage Comment: Store at 4°C for up to 3 months. For longer storage, aliquot and store at -20°C.

## Images



### Immunofluorescence

**Image 1.** Immunofluorescence staining of fixed NIH3T3 cells with anti-Galectin 9 antibody RG9-35. Immunofluorescence analysis of paraformaldehyde fixed RAW264.7 cells on Shi-fix™ coverslips stained with the chimeric rabbit IgG version of RG9-35 (ABIN7072507) at 10 µg/mL for 1h followed by Alexa Fluor® 488 secondary antibody (2 µg/mL), showing membrane staining. The nuclear stain is DAPI (blue). Panels show from left-right, top-bottom ABIN7072507, DAPI, merged channels and an isotype control. The isotype control was an unknown specificity antibody (ABIN5668125) followed by staining

with Alexa Fluor® 488 secondary antibody.