



[Go to Product page](#)

Datasheet for ABIN7072509

Recombinant anti-TNFSF8 antibody

1 Image

Overview

Quantity:	200 µg
Target:	TNFSF8
Reactivity:	Mouse
Host:	Rabbit
Antibody Type:	Recombinant Antibody
Clonality:	Chimeric
Conjugate:	This TNFSF8 antibody is un-conjugated
Application:	Flow Cytometry (FACS), Blocking Peptide (BP), Functional Studies (Func)

Product Details

Immunogen:	This antibody was raised by immunising Sprague Dawley rats with the CHO cells stably transfected with murine CD153 and fusing the splenocytes with P3U1 myeloma cells.
Clone:	RM153
Isotype:	IgG kappa
Characteristics:	Original Species of Ab: Rat Original Format of Ab: IgG2b
Purification:	Purified antibody.

Target Details

Target:	TNFSF8
---------	--------

Target Details

Alternative Name:	CD153 (TNFSF8 Products)
Background:	CD30-L, CD30 ligand, Tumor necrosis factor ligand superfamily member 8.
UniProt:	P32972

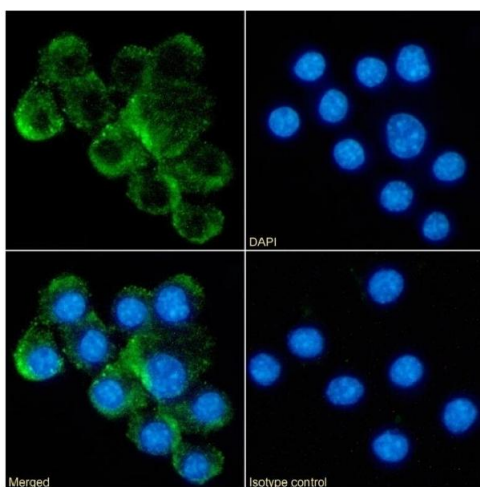
Application Details

Application Notes:	Optimal working dilution should be determined by the investigator.
Comment:	This chimeric rabbit antibody was made using the variable domain sequences of the original Rat IgG2b format, for improved compatibility with existing reagents, assays and techniques.
Restrictions:	For Research Use only

Handling

Buffer:	PBS with 0.02 % Proclin 300.
Preservative:	ProClin
Precaution of Use:	This product contains ProClin: a POISONOUS AND HAZARDOUS SUBSTANCE which should be handled by trained staff only.
Storage:	4 °C,-20 °C
Storage Comment:	Store at 4°C for up to 3 months. For longer storage, aliquot and store at -20°C.

Images



Immunofluorescence

Image 1. Immunofluorescence staining of fixed RAW264.7 cells with anti-CD153 antibody RM153. Immunofluorescence analysis of paraformaldehyde fixed RAW264.7 cells on Shi-fix™ coverslips stained with the chimeric rabbit IgG version of RG9-35 (ABIN7072509) at 10 µg/mL for 1h followed by Alexa Fluor® 488 secondary antibody (2 µg/mL), showing membrane staining. The nuclear stain is DAPI (blue). Panels show from left-right, top-bottom ABIN7072509, DAPI, merged channels and an isotype control. The isotype control was an unknown specificity antibody (ABIN5668125) followed by staining

with Alexa Fluor® 488 secondary antibody.