

Datasheet for ABIN7072511

Recombinant anti-TIMD2 antibody (Extracellular Domain)[Go to Product page](#)**1** Image

Overview

Quantity:	200 µg
Target:	TIMD2
Binding Specificity:	AA 1-230, Extracellular Domain
Reactivity:	Mouse
Host:	Rabbit
Antibody Type:	Recombinant Antibody
Clonality:	Chimeric
Conjugate:	This TIMD2 antibody is un-conjugated
Application:	Flow Cytometry (FACS), Western Blotting (WB), Functional Studies (Func), Immunohistochemistry (IHC), Blocking Peptide (BP)

Product Details

Immunogen:	This antibody was raised by immunising Sprague Dawley rats with TIM-2-Ig consisting of the extracellular domain (aa 1-230 of mouse TIM-2) and the Fc portion of mouse IgG2a, emulsified in complete Freund's adjuvant and then fusing lymph node cells from the immunized rats with P3U1 myeloma cells.
Clone:	RMT2-14
Isotype:	IgG lambda
Characteristics:	Original Species of Ab: Rat Original Format of Ab: IgG2a
Purification:	Purified antibody.

Target Details

Target:	TIMD2
Alternative Name:	TIM-2 (TIMD2 Products)
Background:	TIMD2, T Cell Immunoglobulin Mucin-2, T Cell immunoglobulin and mucin domain protein 2, TIM3
UniProt:	Q8R183

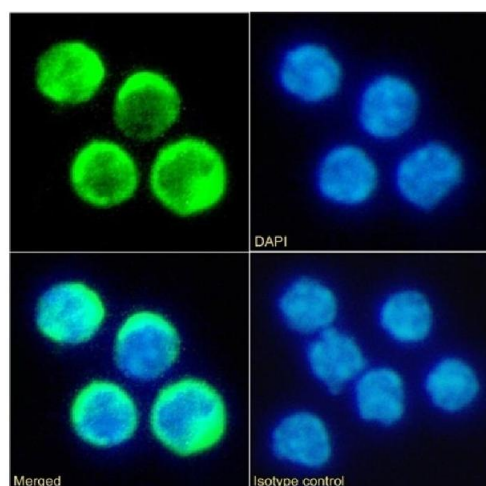
Application Details

Application Notes:	Optimal working dilution should be determined by the investigator.
Comment:	This chimeric rabbit antibody was made using the variable domain sequences of the original Rat IgG2a format, for improved compatibility with existing reagents, assays and techniques.
Restrictions:	For Research Use only

Handling

Buffer:	PBS with 0.02 % Proclin 300.
Preservative:	ProClin
Precaution of Use:	This product contains ProClin: a POISONOUS AND HAZARDOUS SUBSTANCE which should be handled by trained staff only.
Storage:	4 °C,-20 °C
Storage Comment:	Store at 4°C for up to 3 months. For longer storage, aliquot and store at -20°C.

Images



Immunofluorescence

Image 1. Immunofluorescence staining of fixed mouse splenocytes with anti-TIM-2 antibody RMT2-14. Immunofluorescence analysis of paraformaldehyde fixed mouse splenocytes on Shi-fix™ coverslips stained with the chimeric rabbit IgG version of RMT2-14 (ABIN7072511) at 10 µg/mL for 1h followed by Alexa Fluor® 488 secondary antibody (2 µg/mL), showing membrane staining. The nuclear stain is DAPI (blue). Panels show from left-right, top-

bottom ABIN7072511, DAPI, merged channels and an isotype control. The isotype control was an unknown specificity antibody (ABIN5668079) followed by staining with Alexa Fluor® 488 secondary antibody.