

Datasheet for ABIN7072524

Recombinant anti-TAG-72 (Minretumomab Biosimilar) antibody



[Go to Product page](#)

1 Image

Overview

Quantity:	200 µg
Target:	TAG-72 (Minretumomab Biosimilar)
Reactivity:	Human
Host:	Rabbit
Antibody Type:	Recombinant Antibody
Clonality:	Chimeric
Conjugate:	This TAG-72 (Minretumomab Biosimilar) antibody is un-conjugated
Application:	Flow Cytometry (FACS), Immunohistochemistry (IHC), Radioimmunoassay (RIA), Western Blotting (WB)

Product Details

Immunogen:	This antibody was raised by immunising BALB/c mice with TAG-72 purified from LS-174T human carcinoma xenograft.
Isotype:	IgG kappa
Characteristics:	Original Species of Ab: Mouse Original Format of Ab: IgG1
Purification:	Purified antibody.

Target Details

Target:	TAG-72 (Minretumomab Biosimilar)
Abstract:	TAG-72 (Minretumomab Biosimilar) Products

Target Details

Background: CA 72-4, Tumor-associated antigen 72, TAG72, Tumor-associated glycoprotein 72

Application Details

Application Notes: Optimal working dilution should be determined by the investigator.

Comment: This chimeric rabbit antibody was made using the variable domain sequences of the original Mouse IgG1 format, for improved compatibility with existing reagents, assays and techniques.

Restrictions: For Research Use only

Handling

Buffer: PBS with 0.02 % Proclin 300.

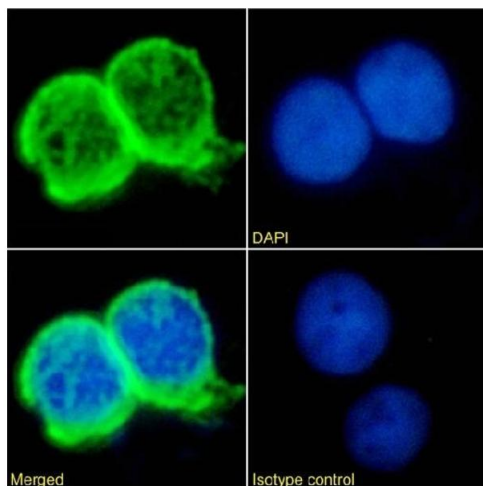
Preservative: ProClin

Precaution of Use: This product contains ProClin: a POISONOUS AND HAZARDOUS SUBSTANCE which should be handled by trained staff only.

Storage: 4 °C, -20 °C

Storage Comment: Store at 4°C for up to 3 months. For longer storage, aliquot and store at -20°C.

Images



Immunofluorescence

Image 1. Immunofluorescence staining of Jurkat cells using anti-TAG-72 antibody Minretumomab (CC49). Immunofluorescence analysis of paraformaldehyde fixed Jurkat cells immobilized on Shi-fix™ cover-slips and stained with the chimeric rabbit IgG version of Minretumomab (CC49) (ABIN7072524) at 10 µg/mL followed by Alexa Fluor® 488 secondary antibody (2 µg/mL), showing strong membrane staining. The nuclear stain is DAPI (blue). Panels show from left-right, top-bottom ABIN7072524, DAPI, merged channels and an isotype control. The isotype control was stained with anti-Fluorescein antibody (ABIN5668035) followed by Alexa Fluor® 488 secondary antibody.