

Datasheet for ABIN7072525

Recombinant anti-CEA antibody**2** Images[Go to Product page](#)

Overview

Quantity:	200 µg
Target:	CEA
Reactivity:	Human
Host:	Mouse
Antibody Type:	Recombinant Antibody
Clonality:	Monoclonal
Conjugate:	This CEA antibody is un-conjugated
Application:	Immunohistochemistry (IHC), Labeling (LbI)

Product Details

Immunogen:	This antibody was raised by immunising mice with both carcinoembryonic antigen (CEA) purified from the metastases of colonic tumours, and heat-treated CEA.
Clone:	A5B7
Isotype:	IgG1 kappa
Characteristics:	Original Species of Ab: Mouse Original Format of Ab: IgG1
Purification:	Purified antibody.

Target Details

Target:	CEA
---------	-----

Target Details

Alternative Name:	carcinoembryonic antigen (CEA Products)
Background:	CEA, CD66, Q7KZ28, Q13985, Q14081
UniProt:	Q13982

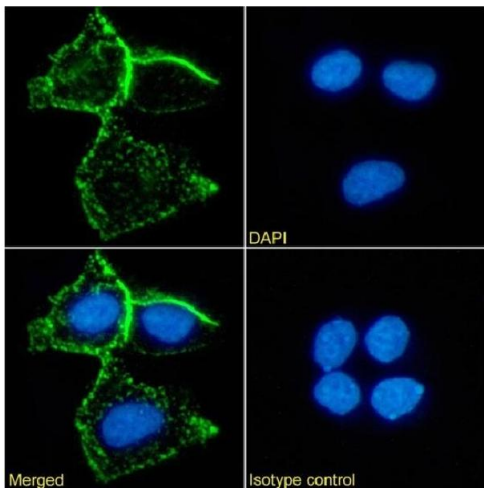
Application Details

Application Notes:	Optimal working dilution should be determined by the investigator.
Restrictions:	For Research Use only

Handling

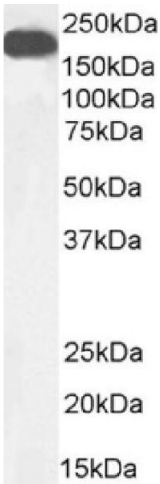
Buffer:	PBS with 0.02 % Proclin 300.
Preservative:	ProClin
Precaution of Use:	This product contains ProClin: a POISONOUS AND HAZARDOUS SUBSTANCE which should be handled by trained staff only.
Storage:	4 °C, -20 °C
Storage Comment:	Store at 4°C for up to 3 months. For longer storage, aliquot and store at -20°C.

Images



Immunofluorescence

Image 1. Immunofluorescence staining of MCF7 cells using anti-carcinoembryonic antigen A5B7. Immunofluorescence analysis of paraformaldehyde fixed MCF7 cells stained with the chimeric mouse IgG version of A5B7 (ABIN7072525) at 10 µg/mL followed by Alexa Fluor® 488 secondary antibody (2 µg/mL), showing membrane staining. The nuclear stain is DAPI (blue). Panels show from left-right, top-bottom ABIN7072536, DAPI, merged channels and an isotype control. The isotype control was stained with anti-unknown antibody (ABIN5668079) followed by Alexa Fluor® 488 secondary antibody.



Western Blotting

Image 2. Western Blot using anti-carcinoembryonic antigen antibody A5B7. human colorectal carcinoma tissue lysate (35 µg protein in RIPA buffer) was resolved on an SDS PAGE gel and blots probed with the chimeric mouse IgG version of A5B7 (ABIN7072525) at 0.01 µg/mL before detection using an anti-mouse secondary antibody. A primary incubation of 1h was used and protein was detected by chemiluminescence.