

Datasheet for ABIN7072535

Recombinant anti-RHD antibody[Go to Product page](#)**1** Image

Overview

Quantity:	200 µg
Target:	RHD
Reactivity:	Human
Host:	Rabbit
Antibody Type:	Recombinant Antibody
Clonality:	Chimeric
Conjugate:	This RHD antibody is un-conjugated
Application:	Flow Cytometry (FACS)

Product Details

Immunogen:	A Rh- volunteer blood donor (r/r) was injected with 5ml of Rh+ erythrocytes (R1/r) and the peripheral lymphocytes were isolated and transformed with 1 ml of culture supernatant of the EBV marmoset B96-8 cell line.
Clone:	D7C2
Isotype:	IgG lambda
Characteristics:	Original Species of Ab: Human Original Format of Ab: IgM
Purification:	Purified antibody.

Target Details

Target:	RHD
---------	-----

Target Details

Alternative Name: Rhesus D antigen ([RHD Products](#))

Background: CD240D, RHXIII, Rh polypeptide 2, RhPII

Application Details

Application Notes: Optimal working dilution should be determined by the investigator.

Comment: This chimeric rabbit antibody was made using the variable domain sequences of the original Human IgM format, for improved compatibility with existing reagents, assays and techniques.

Restrictions: For Research Use only

Handling

Buffer: PBS with 0.02 % Proclin 300.

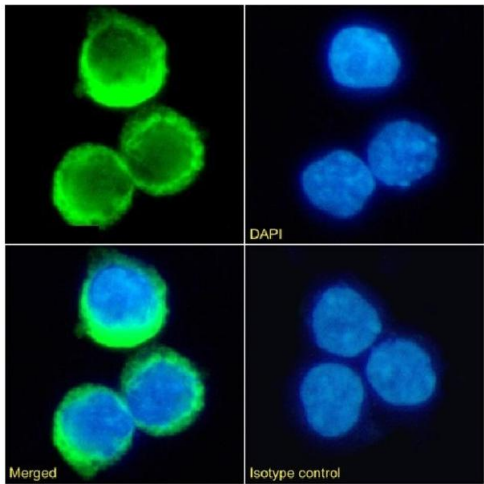
Preservative: ProClin

Precaution of Use: This product contains ProClin: a POISONOUS AND HAZARDOUS SUBSTANCE which should be handled by trained staff only.

Storage: 4 °C, -20 °C

Storage Comment: Store at 4°C for up to 3 months. For longer storage, aliquot and store at -20°C.

Images



Immunofluorescence

Image 1. Immunofluorescence staining of fixed K562 cells with anti-Rhesus D antigen antibody D7C2. Immunofluorescence analysis of paraformaldehyde fixed K562 cells on Shi-fix™ coverslips stained with the chimeric rabbit IgG version of D7C2 (ABIN7072535) at 10 µg/mL for 1h followed by Alexa Fluor® 488 secondary antibody (2 µg/mL), showing membrane staining. The nuclear stain is DAPI (blue). Panels show from left-right, top-bottom ABIN7072535, DAPI, merged channels and an isotype control. The isotype control was an unknown specificity antibody (ABIN5668079) followed by staining with Alexa Fluor® 488 secondary antibody.