



[Go to Product page](#)

Datasheet for ABIN7072541

Recombinant anti-RAGE antibody

2 Images

Overview

Quantity:	200 µg
Target:	RAGE (AGER)
Reactivity:	Human
Host:	Rabbit
Antibody Type:	Recombinant Antibody
Clonality:	Chimeric
Conjugate:	This RAGE antibody is un-conjugated
Application:	Western Blotting (WB), Immunohistochemistry (IHC), ELISA, Flow Cytometry (FACS), Immunofluorescence (IF), Surface Plasmon Resonance (SPR)

Product Details

Immunogen:	Human RAGE protein.
Clone:	2A11
Isotype:	IgG kappa
Characteristics:	Original Species of Ab: Mouse Original Format of Ab: IgG1
Purification:	Purified antibody.

Target Details

Target:	RAGE (AGER)
---------	-------------

Target Details

Alternative Name:	RAGE (AGER Products)
Background:	AGER, advanced glycosylation end product-specific receptor, receptor for advanced glycosylation end products
Pathways:	Carbohydrate Homeostasis , Toll-Like Receptors Cascades , Smooth Muscle Cell Migration , S100 Proteins

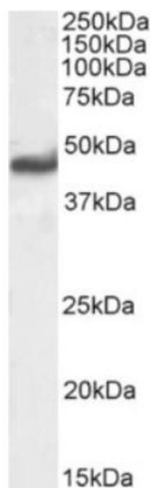
Application Details

Application Notes:	Optimal working dilution should be determined by the investigator.
Comment:	This chimeric rabbit antibody was made using the variable domain sequences of the original Mouse IgG1 format, for improved compatibility with existing reagents, assays and techniques.
Restrictions:	For Research Use only

Handling

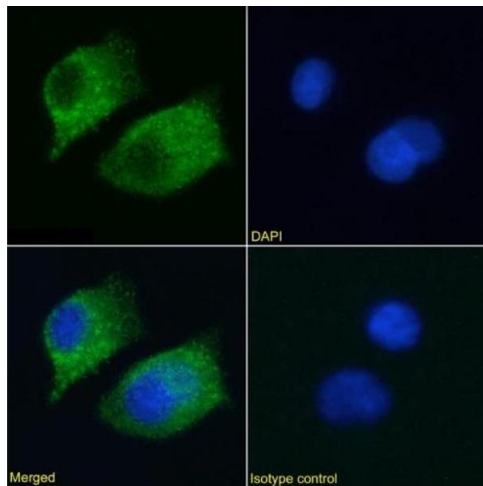
Buffer:	PBS with 0.02 % Proclin 300.
Preservative:	ProClin
Precaution of Use:	This product contains ProClin: a POISONOUS AND HAZARDOUS SUBSTANCE which should be handled by trained staff only.
Storage:	4 °C, -20 °C
Storage Comment:	Store at 4°C for up to 3 months. For longer storage, aliquot and store at -20°C.

Images



Western Blotting

Image 1. Western Blot using anti-RAGE antibody 2A11. Human lung lysate (35 µg protein in RIPA buffer) was resolved on an SDS PAGE gel and blots probed with the chimeric rabbit IgG version of 2A11 (ABIN7072541) at 0.03 µg/mL before detection using an anti-rabbit secondary antibody. A primary incubation of 1h was used and protein was detected by chemiluminescence.



Immunofluorescence

Image 2. Immunofluorescence staining of A549 cells using anti-RAGE antibody 2A11. Immunofluorescence analysis of paraformaldehyde fixed A549 cells stained with the chimeric rabbit IgG version of 2A11 (ABIN7072541) at 10 μ g/mL followed by Alexa Fluor® 488 secondary antibody (2 μ g/mL), showing cytoplasmic staining. The nuclear stain is DAPI (blue). Panels show from left-right, top-bottom ABIN7072541, DAPI, merged channels and an isotype control. The isotype control was stained with anti-Fluorescein antibody (ABIN5668035) followed by Alexa Fluor® 488 secondary antibody.