

Datasheet for ABIN7072557

Recombinant anti-IL9 Receptor antibody[Go to Product page](#)**1** Image

Overview

Quantity:	200 µg
Target:	IL9 Receptor (IL9R)
Reactivity:	Human
Host:	Rabbit
Antibody Type:	Recombinant Antibody
Clonality:	Chimeric
Conjugate:	This IL9 Receptor antibody is un-conjugated
Application:	Immunoprecipitation (IP), Blocking Peptide (BP)

Product Details

Immunogen:	This antibody was raised by immunising DBA/2 mice with P815 mastocytoma cells transfected with human IL-9R cDNA.
Clone:	AH9R2
Isotype:	IgG kappa
Characteristics:	Original Species of Ab: Mouse Original Format of Ab: IgG2a
Purification:	Purified antibody.

Target Details

Target:	IL9 Receptor (IL9R)
---------	---------------------

Target Details

Alternative Name:	IL-9R (IL9R Products)
Background:	Interleukin-9 receptor, IL9R, CD129
UniProt:	Q01113
Pathways:	JAK-STAT Signaling , Growth Factor Binding

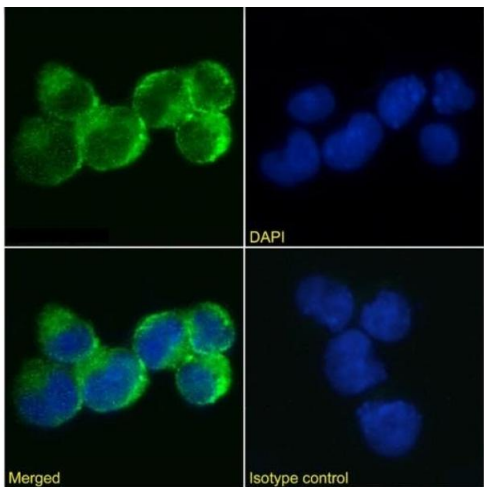
Application Details

Application Notes:	Optimal working dilution should be determined by the investigator.
Comment:	This chimeric rabbit antibody was made using the variable domain sequences of the original Mouse IgG2b format, for improved compatibility with existing reagents, assays and techniques.
Restrictions:	For Research Use only

Handling

Buffer:	PBS with 0.02 % Proclin 300.
Preservative:	ProClin
Precaution of Use:	This product contains ProClin: a POISONOUS AND HAZARDOUS SUBSTANCE which should be handled by trained staff only.
Storage:	4 °C, -20 °C
Storage Comment:	Store at 4°C for up to 3 months. For longer storage, aliquot and store at -20°C.

Images



Immunofluorescence

Image 1. Immunofluorescence staining of Jurkat cells using anti-IL-9R antibody AH9R2. Immunofluorescence analysis of paraformaldehyde fixed Jurkat cells immobilized on Shi-fix™ cover-slips and stained with the chimeric rabbit IgG version of AH9R2 (ABIN7072557) at 10 µg/mL followed by Alexa Fluor® 488 secondary antibody (2 µg/mL), showing membrane staining. The nuclear stain is DAPI (blue). Panels show from left-right, top-bottom ABIN7072557, DAPI, merged channels and an isotype control. The isotype

control was stained with anti-Fluorescein antibody (ABIN5668035) followed by Alexa Fluor® 488 secondary antibody.