

Datasheet for ABIN7072562

**Recombinant anti-SLC3A2 antibody****2** Images[Go to Product page](#)

## Overview

Quantity:	200 µg
Target:	SLC3A2
Reactivity:	Mouse
Host:	Rabbit
Antibody Type:	Recombinant Antibody
Clonality:	Chimeric
Conjugate:	This SLC3A2 antibody is un-conjugated
Application:	Flow Cytometry (FACS), Immunoprecipitation (IP), Stimulation (St)

## Product Details

Immunogen:	This antibody was raised by immunising rats with an IL 2-producing subline of the mouse T lymphoma EL4.
Clone:	RL388
Isotype:	IgG kappa
Characteristics:	Original Species of Ab: Rat Original Format of Ab: IgG2a
Purification:	Purified antibody.

## Target Details

Target:	SLC3A2
---------	--------

## Target Details

Alternative Name:	CD98 ( <a href="#">SLC3A2 Products</a> )
Background:	4F2hc, 4F2 cell-surface antigen heavy chain, Solute carrier family 3 member 2, RL-388, 4F2, SLC3A2,
UniProt:	<a href="#">P10852</a>

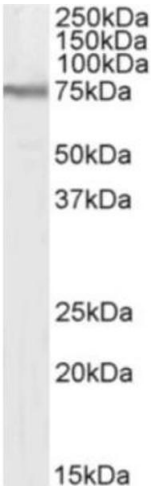
## Application Details

Application Notes:	Optimal working dilution should be determined by the investigator.
Comment:	This chimeric rabbit antibody was made using the variable domain sequences of the original Rat IgG2b format, for improved compatibility with existing reagents, assays and techniques.
Restrictions:	For Research Use only

## Handling

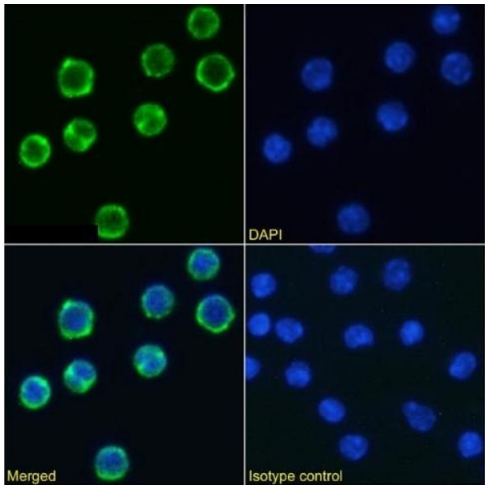
Buffer:	PBS with 0.02 % Proclin 300.
Preservative:	ProClin
Precaution of Use:	This product contains ProClin: a POISONOUS AND HAZARDOUS SUBSTANCE which should be handled by trained staff only.
Storage:	4 °C, -20 °C
Storage Comment:	Store at 4°C for up to 3 months. For longer storage, aliquot and store at -20°C.

## Images



### Western Blotting

**Image 1.** Western Blot using anti-CD98 antibody RL388. Mouse fetal liver lysate (35 µg protein in RIPA buffer) was resolved on an SDS PAGE gel and blots probed with the chimeric rabbit IgG version of RL388 (ABIN7072562) at 0.05 µg/mL before detection using an anti-rabbit secondary antibody. A primary incubation of 1h was used and protein was detected by chemiluminescence.



**Immunofluorescence**

**Image 2.** Immunofluorescence staining of mouse splenocytes using anti-CD98 antibody RL388. Immunofluorescence analysis of paraformaldehyde fixed mouse splenocytes immobilized on Shi-fix™ cover-slips and stained with the chimeric rabbit IgG version of RL388 (ABIN7072562) at 10 µg/mL followed by Alexa Fluor® 488 secondary antibody (2 µg/mL), showing membrane staining. The nuclear stain is DAPI (blue). Panels show from left-right, top-bottom ABIN7072562, DAPI, merged channels and an isotype control. The isotype control was stained with anti-Fluorescein antibody (ABIN5668035) followed by Alexa Fluor® 488 secondary antibody.