

Datasheet for ABIN7072567

Recombinant anti-Poliovirus Receptor antibody**3** Images[Go to Product page](#)

Overview

Quantity:	200 µg
Target:	Poliovirus Receptor (PVR)
Reactivity:	Mouse
Host:	Rabbit
Antibody Type:	Recombinant Antibody
Clonality:	Chimeric
Conjugate:	This Poliovirus Receptor antibody is un-conjugated
Application:	ELISA, Flow Cytometry (FACS)

Product Details

Immunogen:	This antibody was raised by immunising rats with recombinant murine CD155, consisting of the entire ectodomain expressed as a HIS-tagged protein.
Clone:	3F1
Isotype:	IgG kappa
Characteristics:	Original Species of Ab: Rat Original Format of Ab: IgG2a
Purification:	Purified antibody.

Target Details

Target:	Poliovirus Receptor (PVR)
---------	---------------------------

Target Details

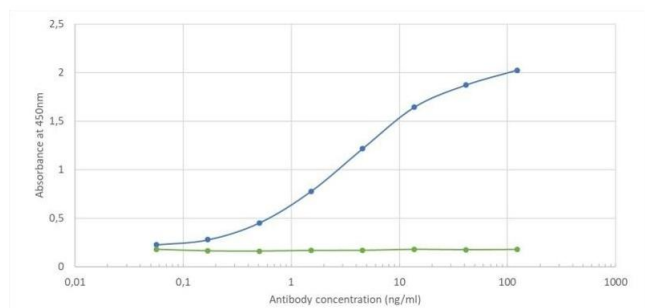
Alternative Name:	CD155 (PVR Products)
Background:	TAGE 3F1, Poliovirus receptor, cellular receptor for poliovirus, Pvr, Tumor-associated antigen 1, Taa1, Tage4, HVED
UniProt:	Q8K094
Pathways:	Regulation of Leukocyte Mediated Immunity , Positive Regulation of Immune Effector Process , Cell-Cell Junction Organization , Cancer Immune Checkpoints , SARS-CoV-2 Protein Interactome

Application Details

Application Notes:	Optimal working dilution should be determined by the investigator.
Comment:	This chimeric rabbit antibody was made using the variable domain sequences of the original Rat IgG2a format, for improved compatibility with existing reagents, assays and techniques.
Restrictions:	For Research Use only

Handling

Buffer:	PBS with 0.02 % Proclin 300.
Preservative:	ProClin
Precaution of Use:	This product contains ProClin: a POISONOUS AND HAZARDOUS SUBSTANCE which should be handled by trained staff only.
Storage:	4 °C, -20 °C
Storage Comment:	Store at 4°C for up to 3 months. For longer storage, aliquot and store at -20°C.



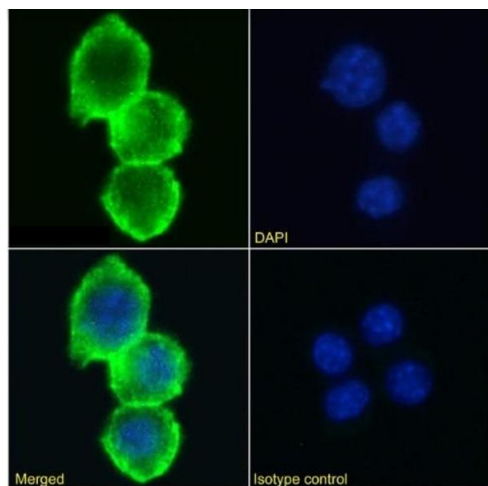
ELISA

Image 1. Binding curve of anti-CD155 antibody 3F1 (ABIN7072567) to recombinant mouse CD155 Fc-Fusion Protein. ELISA Plate coated with recombinant mouse CD155 Fc-Fusion Protein at a concentration of 5 µg/mL. A 3-fold serial dilution from 10,000 ng/mL was performed using ABIN7072567. For detection, a 1:4000 dilution of HRP-labelled anti-rabbit antibody was used.



Western Blotting

Image 2. Western Blot using anti-CD155 antibody 3F1. Mouse thymus lysate (35 µg protein in RIPA buffer) was resolved on an SDS PAGE gel and blots probed with the chimeric rabbit IgG version of 3F1 (ABIN7072567) at 0.1 µg/mL before detection using an anti-rabbit secondary antibody. A primary incubation of 1h was used and protein was detected by chemiluminescence.



Immunofluorescence

Image 3. Immunofluorescence staining of RAW 264.7 cells using anti-CD155 antibody 3F1. Immunofluorescence analysis of paraformaldehyde fixed RAW 264.7 cells stained with the chimeric rabbit IgG version of 3F1 (ABIN7072567) at 10 µg/mL followed by Alexa Fluor® 488 secondary antibody (2 µg/mL), showing membrane staining. The nuclear stain is DAPI (blue). Panels show from left-right, top-bottom ABIN7072567, DAPI, merged channels and an isotype control. The isotype control was stained with anti-Fluorescein antibody (ABIN5668035) followed by Alexa Fluor® 488 secondary antibody.