



[Go to Product page](#)

Datasheet for ABIN7072576

## Recombinant anti-MS4A4A antibody

### 1 Image

#### Overview

Quantity:	200 µg
Target:	MS4A4A
Reactivity:	Human
Host:	Rabbit
Antibody Type:	Recombinant Antibody
Clonality:	Chimeric
Conjugate:	This MS4A4A antibody is un-conjugated
Application:	Flow Cytometry (FACS), Immunoprecipitation (IP)

#### Product Details

Immunogen:	This antibody was generated by immunizing C57BL/6 mice against mouse cell line 300-19 expressing transfected human membrane-spanning 4-domains subfamily A member 4A (MS4A4A)-GFP.
Clone:	5C12
Isotype:	IgG lambda
Characteristics:	Original Species of Ab: Mouse Original Format of Ab: IgG1
Purification:	Purified antibody.

#### Target Details

Target:	MS4A4A
---------	--------

## Target Details

Alternative Name:	MS4A4A ( <a href="#">MS4A4A Products</a> )
Background:	Four-span transmembrane protein 1, human membrane-spanning 4-domains subfamily A member 4A, CD20 antigen-like 1, (MS4A4A)-GFP, MS4A4, 4SPAN1, MS4A
UniProt:	<a href="#">Q96JQ5</a>

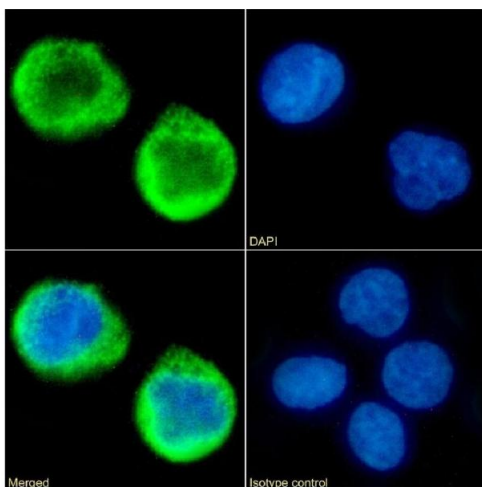
## Application Details

Application Notes:	Optimal working dilution should be determined by the investigator.
Comment:	This chimeric rabbit antibody was made using the variable domain sequences of the original Mouse IgG1 format, for improved compatibility with existing reagents, assays and techniques.
Restrictions:	For Research Use only

## Handling

Buffer:	PBS with 0.02 % Proclin 300.
Preservative:	ProClin
Precaution of Use:	This product contains ProClin: a POISONOUS AND HAZARDOUS SUBSTANCE which should be handled by trained staff only.
Storage:	4 °C, -20 °C
Storage Comment:	Store at 4°C for up to 3 months. For longer storage, aliquot and store at -20°C.

## Images



### Immunofluorescence

**Image 1.** Immunofluorescence staining of fixed K562 cells with anti-MS4A4A antibody 5C12. Immunofluorescence analysis of paraformaldehyde fixed K562 cells on Shi-fix™ coverslips stained with the chimeric rabbit IgG version of 5C12 (ABIN7072576) at 10 µg/mL for 1h followed by Alexa Fluor® 488 secondary antibody (2 µg/mL), showing membrane staining. The nuclear stain is DAPI (blue). Panels show from left-right, top-bottom ABIN7072576, DAPI, merged channels and an isotype control. The isotype control was an unknown specificity antibody

(ABIN5668125) followed by staining with Alexa Fluor® 488 secondary antibody.