

Datasheet for ABIN7072580

Recombinant anti-LRPAP1 antibody**2** Images[Go to Product page](#)

Overview

Quantity:	200 µg
Target:	LRPAP1
Reactivity:	Human
Host:	Rabbit
Antibody Type:	Recombinant Antibody
Clonality:	Chimeric
Conjugate:	This LRPAP1 antibody is un-conjugated
Application:	Western Blotting (WB), Immunohistochemistry (IHC), ELISA, Immunoprecipitation (IP)

Product Details

Immunogen:	This antibody was raised by immunising mice with human placental RAP.
Clone:	7F1
Isotype:	IgG kappa
Characteristics:	Original Species of Ab: Mouse Original Format of Ab: IgG1
Purification:	Purified antibody.

Target Details

Target:	LRPAP1
Alternative Name:	RAP (LRPAP1 Products)

Target Details

Background:	Receptor-associated protein, low density lipoprotein receptor-associated protein, 39- kDa receptor-associated protein
-------------	-----------------------------------------------------------------------------------------------------------------------

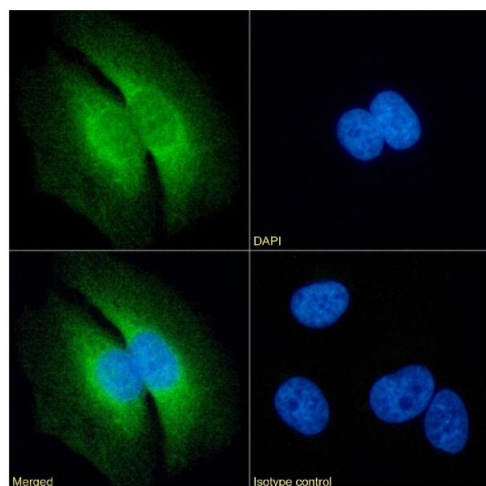
Application Details

Application Notes:	Optimal working dilution should be determined by the investigator.
Comment:	This chimeric rabbit antibody was made using the variable domain sequences of the original Mouse IgG1 format, for improved compatibility with existing reagents, assays and techniques.
Restrictions:	For Research Use only

Handling

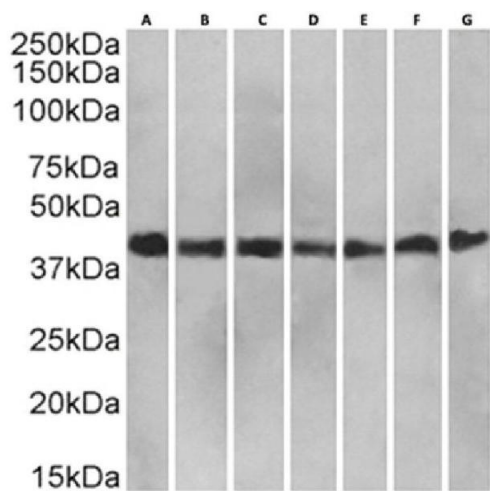
Buffer:	PBS with 0.02 % Proclin 300.
Preservative:	ProClin
Precaution of Use:	This product contains ProClin: a POISONOUS AND HAZARDOUS SUBSTANCE which should be handled by trained staff only.
Storage:	4 °C, -20 °C
Storage Comment:	Store at 4°C for up to 3 months. For longer storage, aliquot and store at -20°C.

Images



Immunofluorescence

Image 1. Immunofluorescence staining of fixed HeLa cells with anti-RAP antibody 7F1. Immunofluorescence analysis of paraformaldehyde fixed HeLa cells on Shi-fix™ coverslips stained with the chimeric rabbit IgG version of 7F1 (ABIN7072580) at 10 µg/mL for 1h followed by Alexa Fluor® 488 secondary antibody (2 µg/mL), showing membrane staining. The nuclear stain is DAPI (blue). Panels show from left-right, top-bottom ABIN7072580, DAPI, merged channels and an isotype control. The isotype control was an unknown specificity antibody (ABIN5668125) followed by staining with Alexa Fluor® 488 secondary antibody.



Western Blotting

Image 2. Western Blot using anti-RAP antibody. Staining in HeLa(A) (0.1 µg/mL), A549 (B) (0.01 µg/mL), HepG2 (C) (0.01 µg/mL), HEK293 (D) (0.03 µg/mL), MCF7 (E) (0.03 µg/mL), Caco-2 (F) (0.001 µg/mL) and U251 (G) (0.001 µg/mL) cell lysates (35 µg protein in RIPA buffer) were resolved on a SDS PAGE gel and blots were probed with the chimeric rabbit version of RAP (ABIN7072580) at 0.5 µg/mL, before detection using an anti-rabbit secondary antibody. A primary incubation of 1h was used and protein was detected by chemiluminescence.