

Datasheet for ABIN7072581

Recombinant anti-MARCO antibody**1** Image[Go to Product page](#)

Overview

Quantity:	200 µg
Target:	MARCO
Reactivity:	Human
Host:	Rabbit
Antibody Type:	Recombinant Antibody
Clonality:	Chimeric
Conjugate:	This MARCO antibody is un-conjugated
Application:	Western Blotting (WB), Immunoprecipitation (IP), Immunofluorescence (IF), Flow Cytometry (FACS), Immunohistochemistry (Frozen Sections) (IHC (fro))

Product Details

Immunogen:	The antibody was raised by immunising BALB/c mice with human alveolar macrophages (AMs) and subsequent creation of hybridomas.
Clone:	PLK1
Isotype:	IgG kappa
Characteristics:	Original Species of Ab: Mouse Original Format of Ab: IgG3
Purification:	Purified antibody.

Target Details

Target:	MARCO
---------	-------

Target Details

Alternative Name:	MARCO (MARCO Products)
Background:	SCARA2, macrophage receptor MARCO, macrophage receptor with collagenous structure, scavenger receptor class A member 2, PLK-1, PLK 1
UniProt:	Q9UEW3
Pathways:	Activation of Innate immune Response

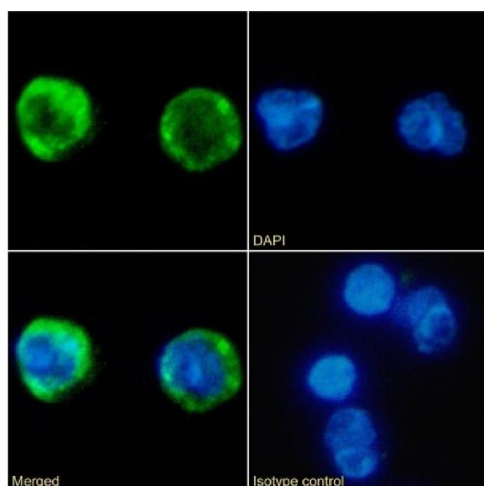
Application Details

Application Notes:	Optimal working dilution should be determined by the investigator.
Comment:	This chimeric rabbit antibody was made using the variable domain sequences of the original Mouse IgG3 format, for improved compatibility with existing reagents, assays and techniques.
Restrictions:	For Research Use only

Handling

Buffer:	PBS with 0.02 % Proclin 300.
Preservative:	ProClin
Precaution of Use:	This product contains ProClin: a POISONOUS AND HAZARDOUS SUBSTANCE which should be handled by trained staff only.
Storage:	4 °C,-20 °C
Storage Comment:	Store at 4°C for up to 3 months. For longer storage, aliquot and store at -20°C.

Images



Immunofluorescence

Image 1. Immunofluorescence staining of fixed Human peripheral blood leukocytes with anti-MARCO antibody PLK1. Immunofluorescence analysis of paraformaldehyde fixed Human peripheral blood leukocytes on Shi-fix™ coverslips stained with the chimeric rabbit IgG version of PLK1 (ABIN7072581) at 10 µg/mL for 1h followed by Alexa Fluor® 488 secondary antibody (2 µg/mL), showing membrane staining. The nuclear stain is DAPI (blue). Panels

show from left-right, top-bottom ABIN7072581, DAPI, merged channels and an isotype control. The isotype control was an unknown specificity antibody (ABIN5668079) followed by staining with Alexa Fluor® 488 secondary antibody.