



[Go to Product page](#)

Datasheet for ABIN7072583

Recombinant anti-TWEAK antibody

1 Image

Overview

Quantity:	200 µg
Target:	TWEAK (TNFSF12)
Reactivity:	Mouse
Host:	Rabbit
Antibody Type:	Recombinant Antibody
Clonality:	Chimeric
Conjugate:	This TWEAK antibody is un-conjugated
Application:	Flow Cytometry (FACS), Blocking Peptide (BP)

Product Details

Immunogen:	This antibody was raised by immunising SD rats with CD8-mTWEAK, a fusion of the human CD8alpha extracellular region to murine TWEAK.
Clone:	MTW-1
Isotype:	IgG kappa
Characteristics:	Original Species of Ab: Rat Original Format of Ab: IgG1
Purification:	Purified antibody.

Target Details

Target:	TWEAK (TNFSF12)
---------	-----------------

Target Details

Alternative Name:	TWEAK (TNFSF12 Products)
Background:	CD255, TNFSF12, TNF-related weak inducer of apoptosis, MTW1, MTW 1, Tumor necrosis factor ligand superfamily member 12,
UniProt:	O54907
Pathways:	Apoptosis

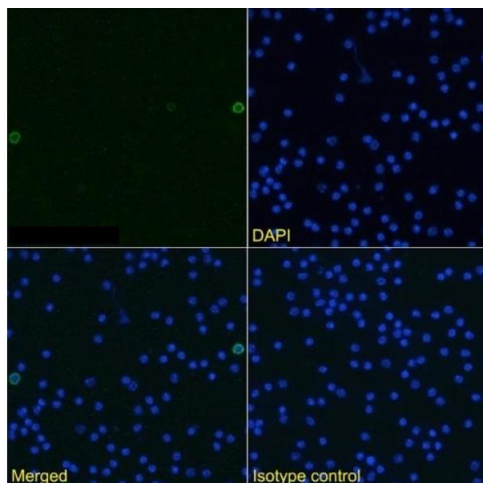
Application Details

Application Notes:	Optimal working dilution should be determined by the investigator.
Comment:	This chimeric rabbit antibody was made using the variable domain sequences of the original Rat IgG1 format, for improved compatibility with existing reagents, assays and techniques.
Restrictions:	For Research Use only

Handling

Buffer:	PBS with 0.02 % Proclin 300.
Preservative:	ProClin
Precaution of Use:	This product contains ProClin: a POISONOUS AND HAZARDOUS SUBSTANCE which should be handled by trained staff only.
Storage:	4 °C,-20 °C
Storage Comment:	Store at 4°C for up to 3 months. For longer storage, aliquot and store at -20°C.

Images



Immunofluorescence

Image 1. Immunofluorescence staining of mouse splenocytes using anti-TWEAK antibody MTW-1. Immunofluorescence analysis of paraformaldehyde fixed mouse splenocytes immobilized on Shi-fix™ cover-slips and stained with the chimeric rabbit IgG version of MTW-1 (ABIN7072583) at 10 µg/mL followed by Alexa Fluor® 488 secondary antibody (2 µg/mL), showing membrane staining in subset of cells. The nuclear stain is DAPI (blue). Panels

show from left-right, top-bottom ABIN7072583, DAPI, merged channels and an isotype control. The isotype control was stained with anti-Fluorescein antibody (ABIN5668035) followed by Alexa Fluor® 488 secondary antibody.