



[Go to Product page](#)

Datasheet for ABIN7072598

Recombinant anti-L1CAM antibody

2 Images

Overview

Quantity:	200 µg
Target:	L1CAM
Reactivity:	Human
Host:	Mouse
Antibody Type:	Recombinant Antibody
Clonality:	Monoclonal
Conjugate:	This L1CAM antibody is un-conjugated
Application:	Western Blotting (WB), Flow Cytometry (FACS), Immunohistochemistry (IHC), Immunofluorescence (IF), Immunoprecipitation (IP)

Product Details

Immunogen:	This antibody was raised by immunising mice with recombinant L1-Fc fusion protein, consisting of the ectodomain of human L1.
Clone:	L1-14-10
Isotype:	IgG1 kappa
Characteristics:	Original Species of Ab: Mouse Original Format of Ab: IgG1
Purification:	Purified antibody.

Target Details

Target:	L1CAM
---------	-------

Target Details

Alternative Name:	CD171 (L1CAM Products)
Background:	L1CAM, 14.10, L1, Neural cell adhesion molecule L1, N-CAM-L1, NCAM-L1
UniProt:	P32004
Pathways:	Synaptic Membrane

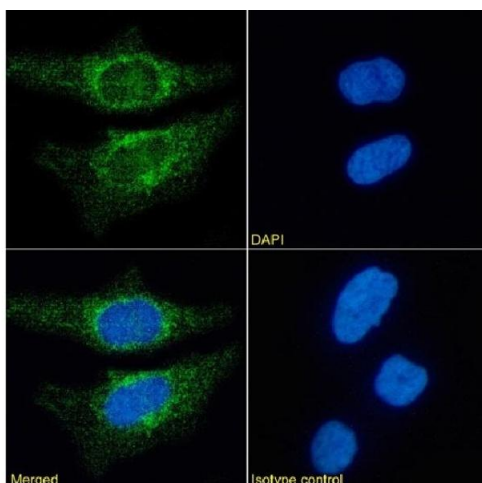
Application Details

Application Notes:	Optimal working dilution should be determined by the investigator.
Restrictions:	For Research Use only

Handling

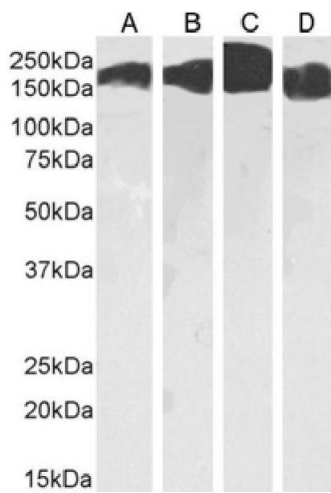
Buffer:	PBS with 0.02 % Proclin 300.
Preservative:	ProClin
Precaution of Use:	This product contains ProClin: a POISONOUS AND HAZARDOUS SUBSTANCE which should be handled by trained staff only.
Storage:	4 °C, -20 °C
Storage Comment:	Store at 4°C for up to 3 months. For longer storage, aliquot and store at -20°C.

Images



Immunofluorescence

Image 1. Immunofluorescence staining of HeLa cells using anti-CD171. L1-14.10 Immunofluorescence analysis of paraformaldehyde fixed HeLa cells stained with the chimeric mouse IgG version of L1-14.10 (ABIN7072598) at 10 µg/mL followed by Alexa Fluor® 488 secondary antibody (2 µg/mL), showing cytoplasmic staining. The nuclear stain is DAPI (blue). Panels show from left-right, top-bottom ABIN7072536, DAPI, merged channels and an isotype control. The isotype control was stained with anti-unknown antibody (ABIN5668079) followed by Alexa Fluor® 488 secondary antibody.



Western Blotting

Image 2. Western Blot using anti-CD171 antibody L1-14.10 (ABIN7072598). HeLa(A) (0.03 $\mu\text{g}/\text{mL}$), Kelly(B) cells (0.01 $\mu\text{g}/\text{mL}$), human brain cerebellum(C) (0.003 $\mu\text{g}/\text{mL}$) and cerebral cortex(D) (0.01 $\mu\text{g}/\text{mL}$) tissue lysate (35 μg protein in RIPA buffer) was resolved on an SDS PAGE gel and blots probed with the chimeric mouse IgG version of L1-14.10 (ABIN7072598) before detection using an anti-mouse secondary antibody. A primary incubation of 1h was used and protein was detected by chemiluminescence.