

Datasheet for ABIN7072606

Recombinant anti-IL-10RA antibody (Extracellular Domain)



[Go to Product page](#)

1 Image

Overview

Quantity:	200 µg
Target:	IL-10RA (IL10RA)
Binding Specificity:	Extracellular Domain
Reactivity:	Mouse
Host:	Rabbit
Antibody Type:	Recombinant Antibody
Clonality:	Chimeric
Conjugate:	This IL-10RA antibody is un-conjugated
Application:	Flow Cytometry (FACS), Blocking Peptide (BP)

Product Details

Immunogen:	This antibody was raised by immunising rats with the purified recombinant extracellular region of mouse Interleukin 10 Receptor.
Clone:	1B1-3a
Isotype:	IgG kappa
Characteristics:	Original Species of Ab: Rat Original Format of Ab: IgG1
Purification:	Purified antibody.

Target Details

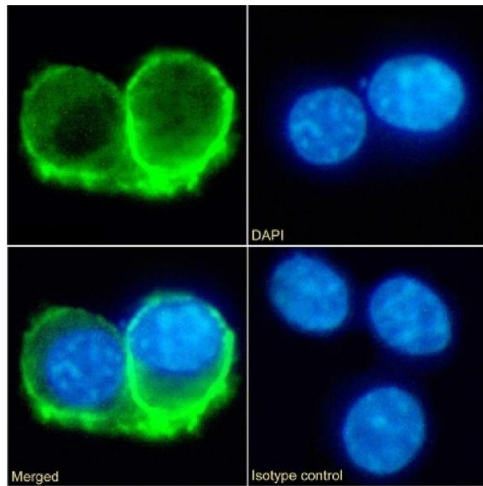
Target:	IL-10RA (IL10RA)
Alternative Name:	IL-10R (IL10RA Products)
Background:	CD210, Interleukin-10 receptor subunit, Interleukin-10 receptor subunit alpha, Il10ra Il10r, IL-10 receptor subunit alpha, IL-10R subunit alpha, IL-10RA, CDw210a, Interleukin-10 receptor subunit 1, IL-10R subunit 1, IL-10R1, IBI-3A, 1B1-3A
UniProt:	Q61727
Pathways:	Growth Factor Binding

Application Details

Application Notes:	Optimal working dilution should be determined by the investigator.
Comment:	This chimeric rabbit antibody was made using the variable domain sequences of the original Rat IgG1 format, for improved compatibility with existing reagents, assays and techniques.
Restrictions:	For Research Use only

Handling

Buffer:	PBS with 0.02 % Proclin 300.
Preservative:	ProClin
Precaution of Use:	This product contains ProClin: a POISONOUS AND HAZARDOUS SUBSTANCE which should be handled by trained staff only.
Storage:	4 °C,-20 °C
Storage Comment:	Store at 4°C for up to 3 months. For longer storage, aliquot and store at -20°C.



Immunofluorescence

Image 1. Immunofluorescence staining of fixed RAW264.7 cells with anti-IL-10R antibody 1B1.3a. Immunofluorescence analysis of paraformaldehyde fixed RAW264.7 cells on Shi-fix™ coverslips stained with the chimeric rabbit IgG version of 1B1.3a (ABIN7072606) at 10 µg/mL for 1h followed by Alexa Fluor® 488 secondary antibody (2 µg/mL), showing membrane staining. The nuclear stain is DAPI (blue). Panels show from left-right, top-bottom ABIN7072606, DAPI, merged channels and an isotype control. The isotype control was an unknown specificity antibody (ABIN5668079) followed by staining with Alexa Fluor® 488 secondary antibody.