

Datasheet for ABIN7072630

## Recombinant anti-CD43 antibody



[Go to Product page](#)

### 2 Images

#### Overview

Quantity:	200 µg
Target:	CD43 (SPN)
Reactivity:	Human
Host:	Rabbit
Antibody Type:	Recombinant Antibody
Clonality:	Chimeric
Conjugate:	This CD43 antibody is un-conjugated
Application:	Flow Cytometry (FACS), Western Blotting (WB), Immunohistochemistry (IHC), Immunofluorescence (IF), Immunoprecipitation (IP)

#### Product Details

Purpose:	Anti-CD43 [84-3C1], Rabbit IgG, kappa
Immunogen:	This antibody was raised by immunizing mice with stimulated human leukocytes.
Clone:	84-3C1
Isotype:	IgG kappa
Specificity:	This antibody recognizes CD43 which is a predominant cell surface sialoprotein of leukocytes which regulates multiple T-cell functions, including T-cell activation, proliferation, differentiation, trafficking and migration.
Characteristics:	Original Species of Ab: Mouse Original Format of Ab: IgG2b

## Product Details

Purification: Protein A affinity purified

## Target Details

Target: CD43 (SPN)

Alternative Name: CD43 ([SPN Products](#))

Background: Leukosialin, Sialophorin, GPL115, Galactoglycoprotein, GALGP, Leukocyte sialoglycoprotein

UniProt: [P16150](#)

Pathways: [Regulation of Leukocyte Mediated Immunity](#)

## Application Details

**Application Notes:** This antibody can be used in the identification of malignant lymphomas. CD43 is expressed on 22-37 % of B-cell lymphomas and, at the same time, it is not expressed on reactive B-cells. Consequently, B-lineage population that co-expresses CD43 is highly likely to be a malignant lymphoma. If used with an anti-CD20 antibody, this clone may be utilized in the immunophenotyping of the lymphomas in formalin-fixed tissues, as Co-staining of a lymphoid infiltrate with anti-CD20 and anti-CD43 usually indicates lymphoma. Importantly, 84-3C1 antibody can be used for the detection of CD43 via various methods. For instance, it was successful in identifying that antigen in a lysate of dendritic cells' platelet via Western blot (Julien et al., 2007). Finally, another group used this antibody during flow cytometric analysis a sample of B-cells (Yoon et al., 2017).

**Comment:** This chimeric rabbit antibody was made using the variable domain sequences of the original Mouse IgG2b format, for improved compatibility with existing reagents, assays and techniques.

**Restrictions:** For Research Use only

## Handling

**Concentration:** 1 mg/mL

**Buffer:** PBS with 0.02 % Proclin 300.

**Preservative:** ProClin

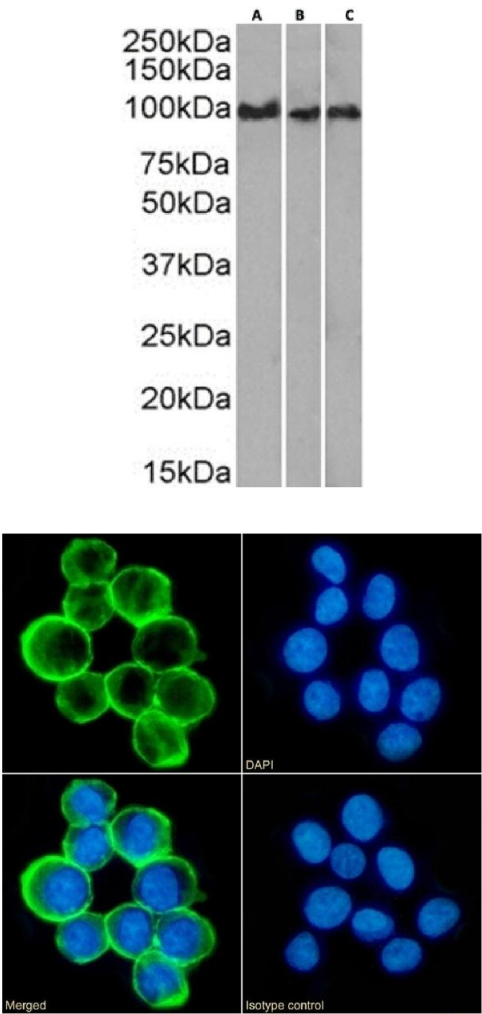
**Precaution of Use:** This product contains ProClin: a POISONOUS AND HAZARDOUS SUBSTANCE which should be handled by trained staff only.

**Storage:** 4 °C, -20 °C

Handling

Storage Comment: Store at 4°C for up to 3 months. For longer storage, aliquot and store at -20°C.

Images



Western Blotting

**Image 1.** Western Blot using anti-CD43 antibody 84-3C. Daudi(A) cell lysate, K562(B) cell lysate and human bone marrow(C) tissue lysate (35 µg protein in RIPA buffer) was resolved on a SDS PAGE gel and blots were probed with the chimeric rabbit version of 84-3C1f (ABIN7072630) at 0.1 µg/mL before detection using an anti-rabbit secondary antibody. A primary incubation of 1h was used and protein was detected by chemiluminescence.

Immunofluorescence

**Image 2.** Immunofluorescence staining of fixed K562 cells with anti-CD43 antibody 84-3C1. Immunofluorescence analysis of paraformaldehyde fixed K562 cells on Shi-fix™ coverslips stained with the chimeric rabbit IgG version of 84-3C1 (ABIN7072630) at 10 µg/mL for 1h followed by Alexa Fluor® 488 secondary antibody (2 µg/mL), showing membrane staining. The nuclear stain is DAPI (blue). Panels show from left-right, top-bottom ABIN7072630, DAPI, merged channels and an isotype control. The isotype control was an unknown specificity antibody (ABIN5668125) followed by staining with Alexa Fluor® 488 secondary antibody.