

Datasheet for ABIN7072651

**Recombinant anti-C5AR1 antibody (AA 1-31)**[Go to Product page](#)**1** Image

## Overview

Quantity:	200 µg
Target:	C5AR1
Binding Specificity:	AA 1-31
Reactivity:	Human, Cow, Rabbit, Ferret
Host:	Rabbit
Antibody Type:	Recombinant Antibody
Clonality:	Chimeric
Conjugate:	This C5AR1 antibody is un-conjugated
Application:	Western Blotting (WB), Flow Cytometry (FACS), ELISA, Immunoprecipitation (IP), Functional Studies (Func), Blocking Peptide (BP)

## Product Details

Immunogen:	This antibody was raised by immunizing mice with a synthetic peptide corresponding to C5a-R, amino acids: 1-31 (N terminal).
Clone:	S5-1
Isotype:	IgG kappa
Cross-Reactivity:	Cow, Ferret, Rabbit
Characteristics:	Original Species of Ab: Mouse Original Format of Ab: IgG2a
Purification:	Purified antibody.

## Target Details

---

Target:	C5AR1
Alternative Name:	C5aR ( <a href="#">C5AR1 Products</a> )
Background:	CD88, C5a anaphylatoxin chemotactic receptor, C5a anaphylatoxin chemotactic receptor 1, C5a anaphylatoxin chemotactic receptor, C5a-R, C5aR
UniProt:	<a href="#">P21730</a>
Pathways:	<a href="#">Complement System</a>

## Application Details

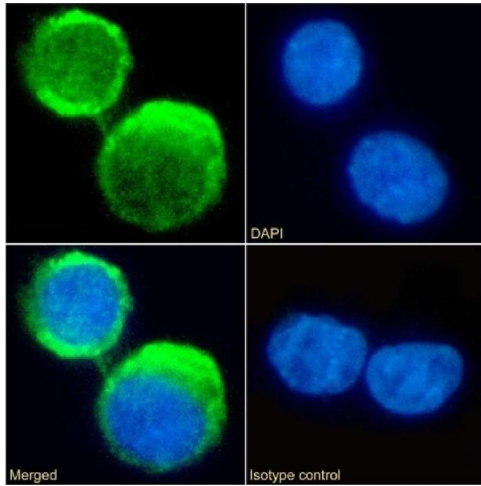
---

Application Notes:	Optimal working dilution should be determined by the investigator.
Comment:	This chimeric rabbit antibody was made using the variable domain sequences of the original Mouse IgG2a format, for improved compatibility with existing reagents, assays and techniques.
Restrictions:	For Research Use only

## Handling

---

Buffer:	PBS with 0.02 % Proclin 300.
Preservative:	ProClin
Precaution of Use:	This product contains ProClin: a POISONOUS AND HAZARDOUS SUBSTANCE which should be handled by trained staff only.
Storage:	4 °C, -20 °C
Storage Comment:	Store at 4°C for up to 3 months. For longer storage, aliquot and store at -20°C.



### Immunofluorescence

**Image 1.** Immunofluorescence staining of fixed U937 cells with anti-C5aR antibody S5/1. Immunofluorescence analysis of paraformaldehyde fixed U937 cells on Shi-fix™ coverslips stained with the chimeric rabbit IgG version S5/1 (ABIN7072651) at 10 µg/mL for 1h followed by Alexa Fluor® 488 secondary antibody (2 µg/mL), showing membrane staining. The nuclear stain is DAPI (blue). Panels show from left-right, top-bottom ABIN7072651, DAPI, merged channels and an isotype control. The isotype control was an unknown specificity antibody (ABIN5668079) followed by staining with Alexa Fluor® 488 secondary antibody.