



[Go to Product page](#)

Datasheet for ABIN7072653

Recombinant anti-C5AR1 antibody (pSer332, pSer338)

1 Image

Overview

Quantity:	200 µg
Target:	C5AR1
Binding Specificity:	pSer332, pSer338
Reactivity:	Human
Host:	Rabbit
Antibody Type:	Recombinant Antibody
Clonality:	Chimeric
Conjugate:	This C5AR1 antibody is un-conjugated
Application:	Western Blotting (WB), Immunofluorescence (IF)

Product Details

Immunogen:	This antibody was raised by immunizing mice a synthetic C5aR C-terminal phosphopeptide that contained phosphoserine instead of serine at position 334 and also at the neighboring phosphorylation sites Ser-332 and Ser-338.
Clone:	32-G1
Isotype:	IgG kappa
Characteristics:	Original Species of Ab: Mouse Original Format of Ab: IgG1
Purification:	Purified antibody.

Target Details

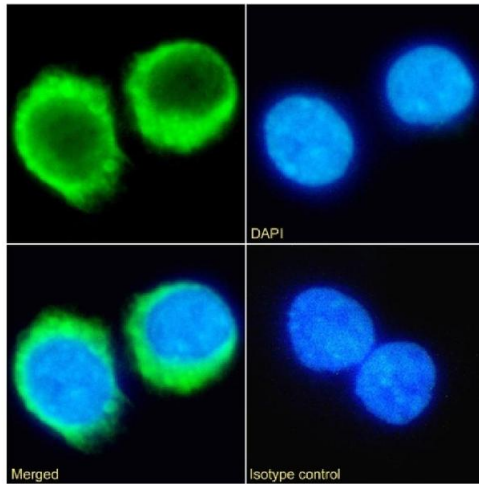
Target:	C5AR1
Alternative Name:	C5aR (C5AR1 Products)
Background:	CD88, C5a anaphylatoxin chemotactic receptor, C5a anaphylatoxin chemotactic receptor 1, C5a anaphylatoxin chemotactic receptor, C5a-R, C5aR, pC5aR, 32G-1
UniProt:	P21730
Pathways:	Complement System

Application Details

Application Notes:	Optimal working dilution should be determined by the investigator.
Comment:	This chimeric rabbit antibody was made using the variable domain sequences of the original Mouse IgG1 format, for improved compatibility with existing reagents, assays and techniques.
Restrictions:	For Research Use only

Handling

Buffer:	PBS with 0.02 % Proclin 300.
Preservative:	ProClin
Precaution of Use:	This product contains ProClin: a POISONOUS AND HAZARDOUS SUBSTANCE which should be handled by trained staff only.
Storage:	4 °C, -20 °C
Storage Comment:	Store at 4°C for up to 3 months. For longer storage, aliquot and store at -20°C.



Immunofluorescence

Image 1. Immunofluorescence staining of fixed U937 cells with anti-C5aR antibody 32-G1. Immunofluorescence analysis of paraformaldehyde fixed U937 cells on Shi-fix™ coverslips stained with the chimeric rabbit IgG version 32-G1 (ABIN7072653) at 10 µg/mL for 1h followed by Alexa Fluor® 488 secondary antibody (2 µg/mL), showing membrane staining. The nuclear stain is DAPI (blue). Panels show from left-right, top-bottom ABIN7072653, DAPI, merged channels and an isotype control. The isotype control was an unknown specificity antibody (ABIN5668079) followed by staining with Alexa Fluor® 488 secondary antibody.