

Datasheet for ABIN7072658

Recombinant anti-CCR5 antibody (pSer337)[Go to Product page](#)**2** Images

Overview

Quantity:	200 µg
Target:	CCR5
Binding Specificity:	pSer337
Reactivity:	Human
Host:	Rabbit
Antibody Type:	Recombinant Antibody
Clonality:	Chimeric
Conjugate:	This CCR5 antibody is un-conjugated
Application:	Western Blotting (WB), ELISA, Flow Cytometry (FACS), Immunofluorescence (IF), Immunoprecipitation (IP)

Product Details

Purpose:	Anti-CCR5 (phosphoserine 337) [V14/2], Rabbit IgG, kappa
Immunogen:	This antibody was raised by immunizing mice with a synthetic phospho peptide corresponding to the C-Terminal region of human CCR5 conjugated to BSA.
Clone:	V14-2
Isotype:	IgG kappa
Specificity:	V14/2 antibody has been demonstrated to exclusively recognise CCR5 (CD195) phosphorylated at Ser 337.
Characteristics:	Original Species of Ab: Mouse

Product Details

Original Format of Ab: IgG2b

Purification: Protein A affinity purified

Target Details

Target: CCR5

Alternative Name: CCR5 ([CCR5 Products](#))

Background: CD195, C-C chemokine receptor type 5, C-C CKR-5, CC-CKR-5, CCR-5, CHEMR13, HIV-1 fusion coreceptor, p337, pS337, Ser-337, Ser337

UniProt: [P51681](#)

Pathways: [Cellular Response to Molecule of Bacterial Origin](#), [cAMP Metabolic Process](#), [Regulation of Cell Size](#)

Application Details

Application Notes: The V14/2 antibody is recommended for the specific detection and analysis of CCR5 phosphorylated on serine 337 (Pollok-Kopp et al., 2003). It was used in the detection of pS337 CCR5 in lysates of RBL-2H3 cells via Western blot (Pollok-Kopp et al., 2003). With other anti-CCR5 antibodies which react with nonphosphorylated CCR5 (Ab01577) or CCR5 phosphorylated on different serine residues (Ab01578), it can be used to study dynamic regulation of CCR5 and of phosphorylation mechanisms.

Comment: This chimeric rabbit antibody was made using the variable domain sequences of the original Mouse IgG2b format, for improved compatibility with existing reagents, assays and techniques.

Restrictions: For Research Use only

Handling

Concentration: 1 mg/mL

Buffer: PBS with 0.02 % Proclin 300.

Preservative: ProClin

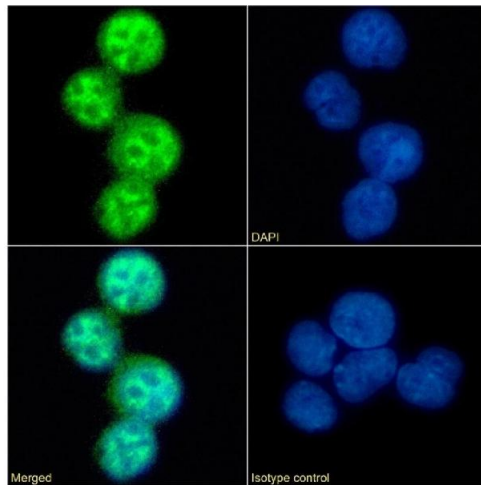
Precaution of Use: This product contains ProClin: a POISONOUS AND HAZARDOUS SUBSTANCE which should be handled by trained staff only.

Storage: 4 °C, -20 °C

Handling

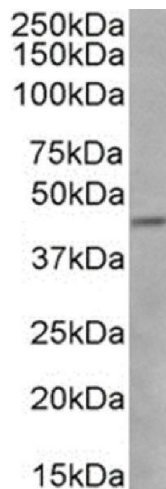
Storage Comment: Store at 4°C for up to 3 months. For longer storage, aliquot and store at -20°C.

Images



Immunofluorescence

Image 1. Immunofluorescence staining of fixed U937 cells with anti-CCR5 (phosphoserine 337) antibody V14/2. Immunofluorescence analysis of paraformaldehyde fixed U937 cells on Shi-fix™ coverslips stained with the chimeric rabbit IgG version of V14/2 (ABIN7072658) at 10 µg/mL for 1h followed by Alexa Fluor® 488 secondary antibody (2 µg/mL), showing membrane staining. The nuclear stain is DAPI (blue). Panels show from left-right, top-bottom ABIN7072658, DAPI, merged channels and an isotype control. The isotype control was an unknown specificity antibody (ABIN5668125) followed by staining with Alexa Fluor® 488 secondary antibody.



Western Blotting

Image 2. Western Blot using anti-CCR5 (phosphoserine 337) antibody V14/2. K562 cell lysate (35 µg protein in RIPA buffer) was resolved on a SDS PAGE gel and blots were probed with the chimeric rabbit version of V14/2 (ABIN7072658) at 2 µg/mL before detection using an anti-rabbit secondary antibody. A primary incubation of 1h was used and protein was detected by chemiluminescence.