

Datasheet for ABIN7072664

**Recombinant anti-CXCR2 antibody (N-Term)****2** Images[Go to Product page](#)

## Overview

Quantity:	200 µg
Target:	CXCR2
Binding Specificity:	AA 1-30, N-Term
Reactivity:	Human
Host:	Rabbit
Antibody Type:	Recombinant Antibody
Clonality:	Chimeric
Conjugate:	This CXCR2 antibody is un-conjugated
Application:	Western Blotting (WB), Immunohistochemistry (IHC), Flow Cytometry (FACS)

## Product Details

Immunogen:	This antibody was raised by immunizing BALB/c mice with a BSA-conjugated peptide comprising of the N-terminal part of IL-8RA (amino acids 1-30).
Clone:	SE2
Isotype:	IgG kappa
Characteristics:	Original Species of Ab: Mouse Original Format of Ab: IgG2b
Purification:	Purified antibody.

## Target Details

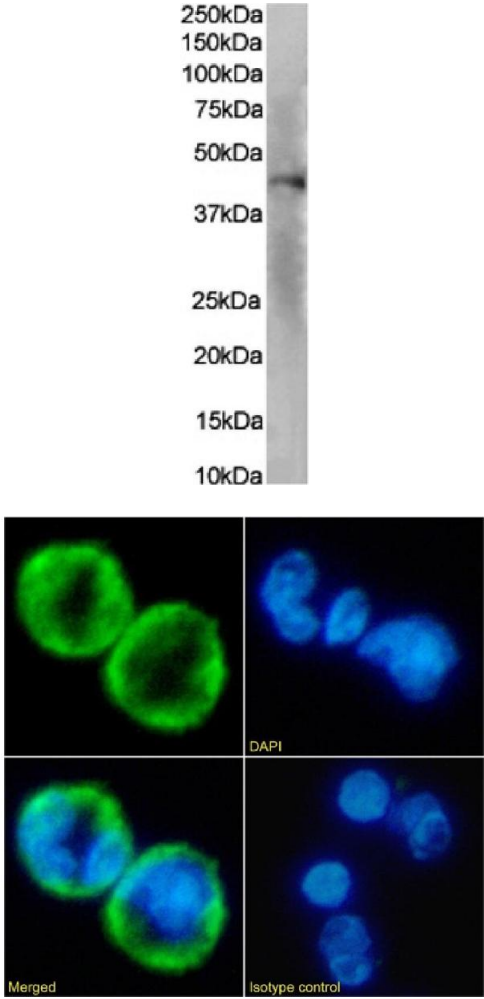
Target:	CXCR2
Alternative Name:	IL-8RA ( <a href="#">CXCR2 Products</a> )
Background:	CXCR-1, C-X-C chemokine receptor type 1, CXC-R1, CDw128a, High affinity interleukin-8 receptor A, IL-8R A, IL-8 receptor type 1, CD181, interleukin 8
UniProt:	<a href="#">P25024</a>
Pathways:	<a href="#">cAMP Metabolic Process</a>

## Application Details

Application Notes:	Optimal working dilution should be determined by the investigator.
Comment:	This chimeric rabbit antibody was made using the variable domain sequences of the original Mouse IgG2b format, for improved compatibility with existing reagents, assays and techniques.
Restrictions:	For Research Use only

## Handling

Buffer:	PBS with 0.02 % Proclin 300.
Preservative:	ProClin
Precaution of Use:	This product contains ProClin: a POISONOUS AND HAZARDOUS SUBSTANCE which should be handled by trained staff only.
Storage:	4 °C, -20 °C
Storage Comment:	Store at 4°C for up to 3 months. For longer storage, aliquot and store at -20°C.



### Western Blotting

**Image 1.** Western Blot using anti-IL-8RA antibody SE2. Human lymph node tissue lysates (35 µg protein in RIPA buffer) were resolved on a SDS PAGE gel and blots were probed with the chimeric rabbit version of SE2 (ABIN7072664) at 0.1 µg/mL before detection using an anti-rabbit secondary antibody. A primary incubation of 1h was used and protein was detected by chemiluminescence.

### Immunofluorescence

**Image 2.** Immunofluorescence staining of fixed human peripheral blood leukocytes with anti-IL-8RA antibody SE2. Immunofluorescence analysis of paraformaldehyde fixed human peripheral blood leukocytes on Shi-fix™ coverslips stained with the chimeric rabbit IgG version of SE2 (ABIN7072664) at 10 µg/mL for 1h followed by Alexa Fluor® 488 secondary antibody (2 µg/mL), showing membrane staining. The nuclear stain is DAPI (blue). Panels show from left-right, top-bottom ABIN7072664, DAPI, merged channels and an isotype control. The isotype control was an unknown specificity antibody (ABIN5668079) followed by staining with Alexa Fluor® 488 secondary antibody.