

Datasheet for ABIN7072672

Recombinant anti-CCR7 antibody



[Go to Product page](#)

1 Image

Overview

Quantity:	200 µg
Target:	CCR7
Reactivity:	Mouse
Host:	Rabbit
Antibody Type:	Recombinant Antibody
Clonality:	Chimeric
Conjugate:	This CCR7 antibody is un-conjugated
Application:	Flow Cytometry (FACS), Immunoprecipitation (IP), Functional Studies (Func)

Product Details

Purpose:	Anti-CCR7 [4B12], Rabbit IgG, kappa
Immunogen:	This antibody was raised by immunizing rats with mouse CCR7 antigen.
Clone:	4B12
Isotype:	IgG kappa
Specificity:	This antibody is specific to the mouse CCR7 protein, which was confirmed by immunoprecipitation (Ritter et al, 2004).
Characteristics:	Original Species of Ab: Rat Original Format of Ab: IgG2a
Purification:	Protein A affinity purified

Target Details

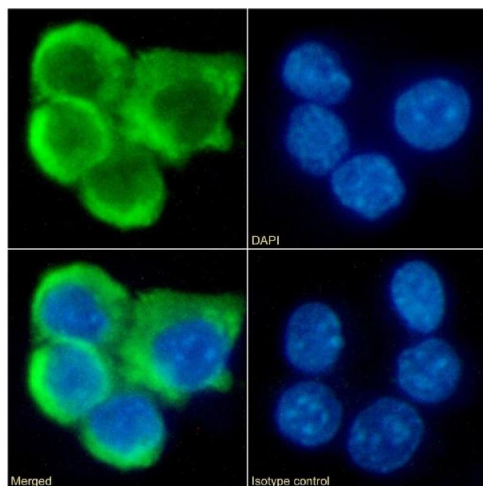
Target:	CCR7
Alternative Name:	CCR7 (CCR7 Products)
Background:	EBI1, EBV-induced G-protein coupled receptor 1, Epstein-Barr virus-induced G-protein coupled receptor 1, MIP-3 beta receptor, CD197, C-C CKR-7, CC-CKR-7, C-C chemokine receptor type 7
UniProt:	P47774
Pathways:	Regulation of Actin Filament Polymerization , Positive Regulation of Immune Effector Process

Application Details

Application Notes:	This antibody was used for flow cytometry and the staining quality can be improved by incubation at 37 °C (Britschgi et al, 2008). This antibody is widely used to monitor the activation of dendritic cells in mice (Ohl et al, 2004, Ritter et al, 2004, Zhao et al, 2019). It was also utilized in immunoprecipitation of the CCR7 receptor protein (Ritter et al, 2004). The antibody does not interfere with ligands binding to the CCR7 receptor, which was confirmed by a transmigration assay (Ritter et al, 2004). It does not interfere with T-cell migration (Ritter et al, 2004). The antibody also is not agonistic as it does not activate the receptor (Ritter et al, 2004).
Comment:	This chimeric rabbit antibody was made using the variable domain sequences of the original Rat IgG2a format, for improved compatibility with existing reagents, assays and techniques.
Restrictions:	For Research Use only

Handling

Concentration:	1 mg/mL
Buffer:	PBS with 0.02 % Proclin 300.
Preservative:	ProClin
Precaution of Use:	This product contains ProClin: a POISONOUS AND HAZARDOUS SUBSTANCE which should be handled by trained staff only.
Storage:	4 °C,-20 °C
Storage Comment:	Store at 4°C for up to 3 months. For longer storage, aliquot and store at -20°C.



Immunofluorescence

Image 1. Immunofluorescence staining of fixed RAW264.7 cells with anti-CCR7 antibody 4B12. Immunofluorescence analysis of paraformaldehyde fixed RAW264.7 cells on Shi-fix™ coverslips stained with the chimeric rabbit IgG version of 4B12 (ABIN7072672) at 10 µg/mL for 1h followed by Alexa Fluor® 488 secondary antibody (2 µg/mL), showing membrane staining. The nuclear stain is DAPI (blue). Panels show from left-right, top-bottom ABIN7072672, DAPI, merged channels and an isotype control. The isotype control was an unknown specificity antibody (ABIN5668125) followed by staining with Alexa Fluor® 488 secondary antibody.