



[Go to Product page](#)

Datasheet for ABIN7072677

Recombinant anti-sCD40L (Toralizumab Biosimilar) antibody

1 Image

Overview

Quantity:	200 µg
Target:	sCD40L (Toralizumab Biosimilar)
Reactivity:	Human
Host:	Rabbit
Antibody Type:	Recombinant Antibody
Clonality:	Monoclonal
Conjugate:	This sCD40L (Toralizumab Biosimilar) antibody is un-conjugated
Application:	Immunofluorescence (IF), Blocking Reagent (BR)

Product Details

Immunogen:	The original monoclonal antibody was generated by immunization with a soluble fusion protein of human gp39 (gp39-CD8).
Clone:	IDEC-131
Isotype:	IgG kappa
Characteristics:	Original Species of Ab: Mouse Original Format of Ab: IgG1
Purification:	Purified antibody.

Target Details

Target:	sCD40L (Toralizumab Biosimilar)
---------	---------------------------------

Target Details

Abstract:	sCD40L (Toralizumab Biosimilar) Products
Target Type:	Biosimilar
Background:	CD40L, gp39, TRAP, Tumor necrosis factor ligand superfamily member 5, TNFSF5, T-cell antigen Gp39, TNF-related activation protein, TNF-related activation protein
UniProt:	P29965

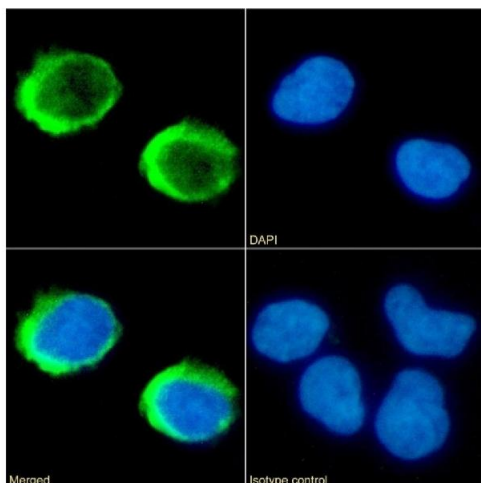
Application Details

Application Notes:	Optimal working dilution should be determined by the investigator.
Comment:	This chimeric rabbit antibody was made using the variable domain sequences of the original Human IgG1 format, for improved compatibility with existing reagents, assays and techniques.
Restrictions:	For Research Use only

Handling

Buffer:	PBS with 0.02 % Proclin 300.
Preservative:	ProClin
Precaution of Use:	This product contains ProClin: a POISONOUS AND HAZARDOUS SUBSTANCE which should be handled by trained staff only.
Storage:	4 °C, -20 °C
Storage Comment:	Store at 4°C for up to 3 months. For longer storage, aliquot and store at -20°C.

Images



Immunofluorescence

Image 1. Immunofluorescence staining of fixed Jurkat cells with anti-CD154 antibody IDEC-131 (Toralizumab). Immunofluorescence analysis of paraformaldehyde fixed Jurkat cells on Shi-fix™ coverslips stained with the chimeric rabbit IgG version of IDEC-131 (Toralizumab) (ABIN7072677) at 10 µg/mL for 1h followed by Alexa Fluor® 488 secondary antibody (2 µg/mL), showing membrane staining. The nuclear stain is DAPI (blue). Panels

show from left-right, top-bottom ABIN7072677, DAPI, merged channels and an isotype control. The isotype control was an unknown specificity antibody (ABIN5668125) followed by staining with Alexa Fluor® 488 secondary antibody.