

Datasheet for ABIN7072735

**Recombinant anti-CD37 antibody**[Go to Product page](#)**1** Image

## Overview

Quantity:	200 µg
Target:	CD37 (TSPAN26)
Reactivity:	Human
Host:	Rabbit
Antibody Type:	Recombinant Antibody
Clonality:	Chimeric
Conjugate:	This CD37 antibody is un-conjugated
Application:	Depletion (Dep)

## Product Details

Immunogen:	This antibody was raised by immunizing mice with CD37.
Clone:	G28-1
Isotype:	IgG kappa
Characteristics:	Original Species of Ab: Mouse Original Format of Ab: IgG1
Purification:	Purified antibody.

## Target Details

Target:	CD37 (TSPAN26)
Alternative Name:	CD37 ( <a href="#">TSPAN26 Products</a> )

## Target Details

Background:	TSPAN-26, Leukocyte antigen CD37, Tetraspanin-26, tetraspanin, Tspan-26
UniProt:	<a href="#">P11049</a>
Pathways:	<a href="#">Positive Regulation of Immune Effector Process</a> , <a href="#">Production of Molecular Mediator of Immune Response</a>

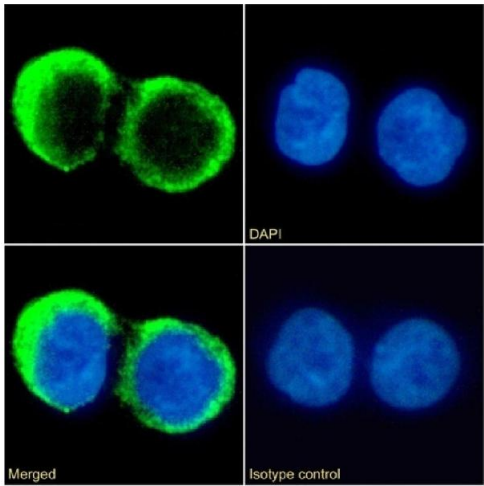
## Application Details

Application Notes:	Optimal working dilution should be determined by the investigator.
Comment:	This chimeric rabbit antibody was made using the variable domain sequences of the original Mouse IgG1 format, for improved compatibility with existing reagents, assays and techniques.
Restrictions:	For Research Use only

## Handling

Buffer:	PBS with 0.02 % Proclin 300.
Preservative:	ProClin
Precaution of Use:	This product contains ProClin: a POISONOUS AND HAZARDOUS SUBSTANCE which should be handled by trained staff only.
Storage:	4 °C, -20 °C
Storage Comment:	Store at 4°C for up to 3 months. For longer storage, aliquot and store at -20°C.

## Images



### Immunofluorescence

**Image 1.** Immunofluorescence staining of fixed Daudi cells with anti-CD37 antibody G28-1. Immunofluorescence analysis of paraformaldehyde fixed Daudi cells on Shi-fix™ coverslips stained with the chimeric rabbit IgG version of G28-1 (ABIN7072735) at 10 µg/mL for 1h followed by Alexa Fluor® 488 secondary antibody (2 µg/mL), showing membrane staining. The nuclear stain is DAPI (blue). Panels show from left-right, top-bottom ABIN7072735, DAPI, merged channels and an isotype control. The isotype control was an unknown specificity antibody

(ABIN5668079) followed by staining with Alexa Fluor® 488 secondary antibody.