

Datasheet for ABIN7072744

**Recombinant anti-Phosducin-Like antibody**[Go to Product page](#)**1** Image

## Overview

Quantity:	50 µg
Target:	Phosducin-Like (PDCL)
Reactivity:	Timothy grass (Phleum pratense)
Host:	Human
Antibody Type:	Recombinant Antibody
Clonality:	Monoclonal
Conjugate:	This Phosducin-Like antibody is un-conjugated
Application:	Western Blotting (WB), ELISA, Dot Blot (DB)

## Product Details

Immunogen:	Recombinant Phl p 1, a grass pollen allergen.
Clone:	25
Isotype:	IgE kappa
Characteristics:	Original Species of Ab: Human Original Format of Ab: scFv
Purification:	Purified antibody.

## Target Details

Target:	Phosducin-Like (PDCL)
Alternative Name:	Phl p 1 ( <a href="#">PDCL Products</a> )

## Target Details

Background: Grass Pollen Allergen

UniProt: [P43213](#)

## Application Details

Application Notes: Optimal working dilution should be determined by the investigator.

Comment: This full-length, reformatted human antibody was made using the variable domain sequences of the original Human scFv format, for improved compatibility with existing reagents, assays and techniques.

Restrictions: For Research Use only

## Handling

Buffer: PBS with 0.02 % Proclin 300.

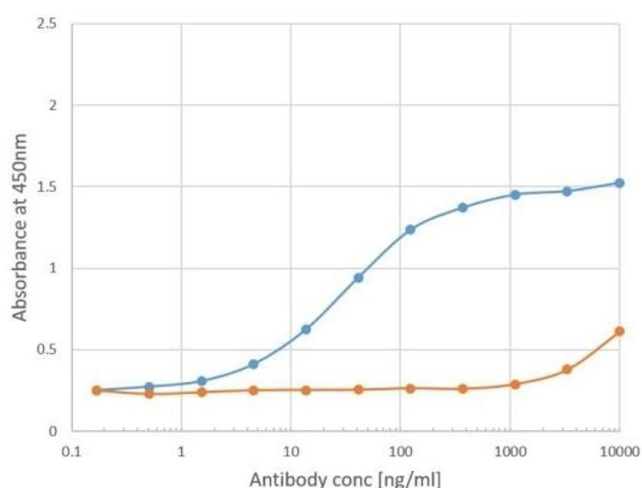
Preservative: ProClin

Precaution of Use: This product contains ProClin: a POISONOUS AND HAZARDOUS SUBSTANCE which should be handled by trained staff only.

Storage: 4 °C, -20 °C

Storage Comment: Store at 4°C for up to 3 months. For longer storage, aliquot and store at -20°C.

## Images



### ELISA

**Image 1.** Binding curve of anti-Phl p 1 antibody Clone 25 (ABIN7072744) to Phl p 1 ELISA Plate coated with Phl p 1 (RayBiotech, 228-22412) at a concentration of 2 µg/mL. A 3-fold serial dilution from 10,000 to 0.1 ng/mL was performed using ABIN7072371. For detection, a 1:4000 dilution of HRP-labelled goat anti-human kappa antibody (Bio-Rad) was used.