

Datasheet for ABIN7072888
anti-ADI1 antibody



[Go to Product page](#)

2 Images

Overview

Quantity:	100 µL
Target:	ADI1
Reactivity:	Rat
Host:	Rabbit
Clonality:	Polyclonal
Conjugate:	This ADI1 antibody is un-conjugated
Application:	Immunohistochemistry (IHC), Immunofluorescence (IF)

Product Details

Immunogen:	Recombinant protein corresponding to Human ADI1
Cross-Reactivity:	Rat
Purification:	Affinity purification

Target Details

Target:	ADI1
Alternative Name:	ADI1 (ADI1 Products)
Background:	ADI1 (acireductone dioxygenase 1) is also named as SIPL, ARD, APL1, HMFT1638, MTCBP-1, FLJ10913, MTCBP1 and belongs to the acireductone dioxygenase (ARD) family. It catalyzes the formation of formate and 2-keto-4-methylthiobutyrate (KMTB) from 1,2-dihydroxy-3-keto-5-methylthiopentene (DHK-MTPene). The downregulation of ADI1 protein expression in human prostate cancer specimens argues that ADI1 potentially inhibits the growth that occurs during

Target Details

prostate cancer progression(PMID:17786183). It has 2 isoforms produced by alternative splicing.

Gene ID: 55256

UniProt: [Q562C9](#)

Pathways: [Methionine Biosynthetic Process](#)

Application Details

Application Notes: IHC/IF (R) 1:800-1:3000/1:600-1:1200

Restrictions: For Research Use only

Handling

Format: Liquid

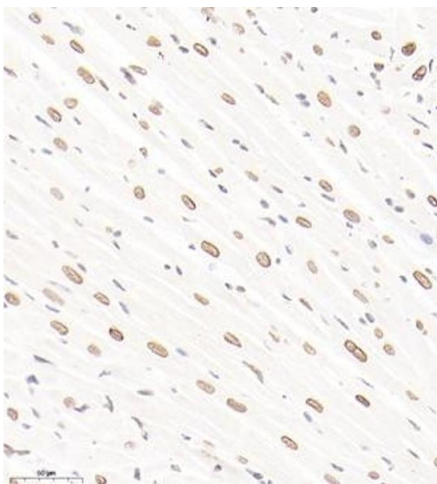
Buffer: PBS, pH 7.4, 0.02 % sodium azide

Preservative: Sodium azide

Precaution of Use: This product contains Sodium azide: a POISONOUS AND HAZARDOUS SUBSTANCE which should be handled by trained staff only.

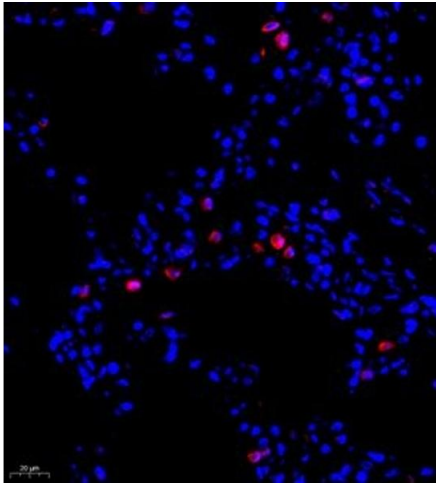
Storage: -20 °C

Images



Immunohistochemistry (Paraffin-embedded Sections)

Image 1. Immunohistochemistry of paraffin embedded rat heart using ADI1 (ABIN7072888) at dilution of 1:1600 (300x lens)



Immunofluorescence (Paraffin-embedded Sections)

Image 2. Immunofluorescence of paraffin embedded rat lung using ADI1 (ABIN7072888) at dilution of 1:1200 (400x lens)