



[Go to Product page](#)

## Datasheet for ABIN7072895 anti-ARPC1B antibody

### 5 Images

#### Overview

Quantity:	100 µL
Target:	ARPC1B
Reactivity:	Human, Mouse, Rat
Host:	Rabbit
Clonality:	Polyclonal
Conjugate:	This ARPC1B antibody is un-conjugated
Application:	Western Blotting (WB), Immunohistochemistry (IHC), Immunofluorescence (IF)

#### Product Details

Immunogen:	KLH conjugated Synthetic peptide corresponding to Mouse Arp2
Cross-Reactivity:	Human, Rat
Purification:	Affinity purification

#### Target Details

Target:	ARPC1B
Alternative Name:	Arp2 ( <a href="#">ARPC1B Products</a> )
Background:	The Arp2 functions as ATP-binding component of the Arp2/3 complex which is involved in regulation of actin polymerization and together with an activating nucleation-promoting factor (NPF) mediates the formation of branched actin networks. Seems to contact the pointed end of the daughter actin filament.
Molecular Weight:	45 kDa

## Target Details

Gene ID:	66713
NCBI Accession:	<a href="#">NP_666355</a>
UniProt:	<a href="#">P61161</a>
Pathways:	<a href="#">RTK Signaling, Regulation of Actin Filament Polymerization</a>

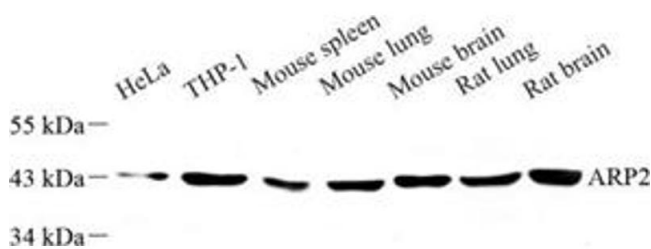
## Application Details

Application Notes:	WB (H,M,R) 1: 500-1: 1000, IHC/IF (M,R) 1:800-1:1600
Restrictions:	For Research Use only

## Handling

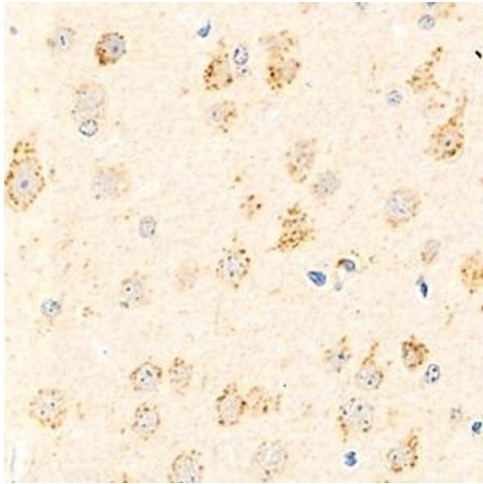
Format:	Liquid
Buffer:	PBS, pH 7.4, 0.02 % sodium azide
Preservative:	Sodium azide
Precaution of Use:	This product contains Sodium azide: a POISONOUS AND HAZARDOUS SUBSTANCE which should be handled by trained staff only.
Storage:	-20 °C

## Images



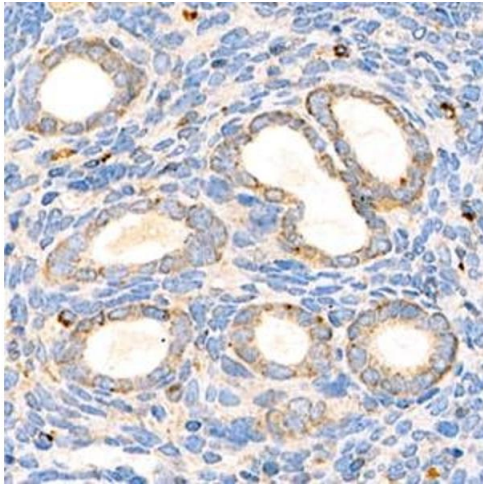
### Western Blotting

**Image 1.** Western blot analysis of Arp2 (ABIN7072895) at dilution of 1: 1000, Lane 1: HeLa cell lysate, Lane 2: THP-1 cell lysate, Lane 3: Mouse spleen tissue lysate, Lane 4: Mouse lung tissue lysate, Lane 5: Mouse brain tissue lysate, Lane 6: Rat lung tissue lysate, Lane 7: Rat brain tissue lysate



#### Immunohistochemistry (Paraffin-embedded Sections)

**Image 2.** Immunohistochemistry analysis of paraffin-embedded mouse brain using,Arp2 (ABIN7072895) at dilution of 1: 800



#### Immunohistochemistry (Paraffin-embedded Sections)

**Image 3.** Immunohistochemistry analysis of paraffin-embedded mouse uterus using,Arp2 (ABIN7072895) at dilution of 1: 1500

Please check the [product details page](#) for more images. Overall 5 images are available for ABIN7072895.