



## Datasheet for ABIN7072905 anti-ACTN1 antibody



[Go to Product page](#)

### 3 Images

#### Overview

Quantity:	100 µL
Target:	ACTN1
Reactivity:	Human, Mouse, Rat
Host:	Rabbit
Clonality:	Polyclonal
Conjugate:	This ACTN1 antibody is un-conjugated
Application:	Western Blotting (WB), Immunohistochemistry (IHC), Immunofluorescence (IF)

#### Product Details

Immunogen:	KLH conjugated Synthetic peptide corresponding to Human alpha Actinin 1/ACTN1
Cross-Reactivity:	Mouse, Rat
Purification:	Affinity purification

#### Target Details

Target:	ACTN1
Alternative Name:	alpha Actinin 1/ACTN1 ( <a href="#">ACTN1 Products</a> )
Background:	Alpha actinins belong to the spectrin gene superfamily which represents a diverse group of cytoskeletal proteins, including the alpha and beta spectrins and dystrophins. Alpha actinin is an actin-binding protein with multiple roles in different cell types. In nonmuscle cells, the cytoskeletal isoform is found along microfilament bundles and adherens-type junctions, where it is involved in binding actin to the membrane. This gene encodes a nonmuscle, cytoskeletal,

## Target Details

alpha actinin isoform and maps to the same site as the structurally similar erythroid beta spectrin gene.

Molecular Weight: 103 kDa

Gene ID: 109711

NCBI Accession: [NP\\_001093](#)

UniProt: [P12814](#)

Pathways: [Cell-Cell Junction Organization](#)

## Application Details

Application Notes: WB (H,M,R) 1:500-1:1000, IHC/IF (H,M,R) 1:300-1:600/1:300-1:1000

Restrictions: For Research Use only

## Handling

Format: Liquid

Buffer: PBS, pH 7.4, 0.02 % sodium azide

Preservative: Sodium azide

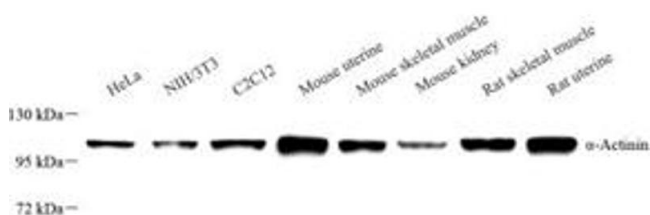
Precaution of Use: This product contains Sodium azide: a POISONOUS AND HAZARDOUS SUBSTANCE which should be handled by trained staff only.

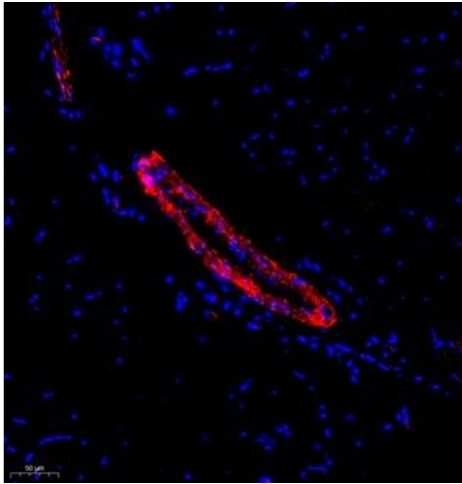
Storage: -20 °C

## Images

### Western Blotting

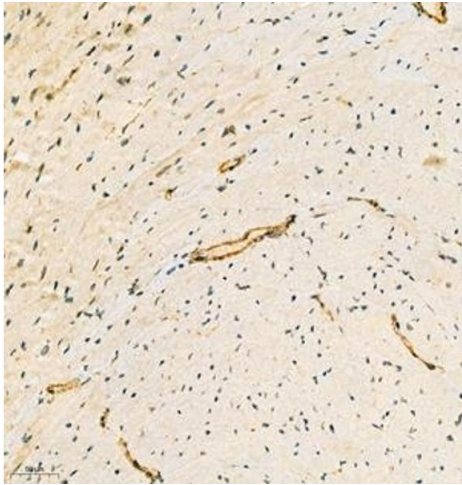
**Image 1.** Western blot analysis of ACTN1 (ABIN7072905), at dilution of 1: 800





### Immunofluorescence (Paraffin-embedded Sections)

**Image 2.** Immunofluorescence analysis of paraffin embedded rat skeletal muscle using ACTN1 (ABIN7072905) at dilution of 1: 500



### Immunohistochemistry (Paraffin-embedded Sections)

**Image 3.** Immunohistochemistry analysis of paraffin embedded mouse heart using ACTN1 (ABIN7072905) at dilution of 1: 300