

Datasheet for ABIN7072916

anti-AFT7 antibody**2** Images[Go to Product page](#)

Overview

Quantity:	100 µL
Target:	AFT7
Reactivity:	Mouse, Rat
Host:	Rabbit
Clonality:	Polyclonal
Conjugate:	This AFT7 antibody is un-conjugated
Application:	Immunohistochemistry (IHC), Immunofluorescence (IF)

Product Details

Immunogen:	Recombinant protein corresponding to Mouse ATF7
Cross-Reactivity:	Rat
Purification:	Affinity purification

Target Details

Target:	AFT7
Alternative Name:	ATF7 (AFT7 Products)
Background:	ATF7 plays important functions in early cell signaling. Binds the cAMP response element (CRE), a sequence present in many viral and cellular promoters. Activator of the NF-ELAM1/delta-A site of the E-selectin promoter. Has no intrinsic transcriptional activity, but activates transcription on formation of JUN or FOS heterodimers. Also can bind TRE promoter sequences when heterodimerized with members of the JUN family. Isoform 4/ATF-A0 acts as a

Target Details

dominant repressor of the E-selectin/NF-ELAM1/delta-A promoter.

UniProt: [Q8R0S1](#)

Application Details

Application Notes: IHC/IF (M,R) 1:800-1:1600

Restrictions: For Research Use only

Handling

Format: Liquid

Buffer: PBS, pH 7.4, 0.02 % sodium azide

Preservative: Sodium azide

Precaution of Use: This product contains Sodium azide: a POISONOUS AND HAZARDOUS SUBSTANCE which should be handled by trained staff only.

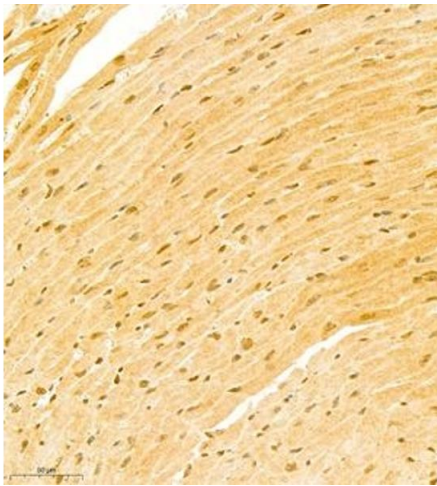
Storage: -20 °C

Images



Immunohistochemistry (Paraffin-embedded Sections)

Image 1. Immunohistochemistry of paraffin embedded rat heart using ATF7 (ABIN7072916) at dilution of 1:800 (300x lens)



Immunohistochemistry (Paraffin-embedded Sections)

Image 2. Immunohistochemistry of paraffin embedded mouse heart using ATF7 (ABIN7072916) at dilution of 1:800 (300x lens)