

Datasheet for ABIN7072974

anti-ADRA1B antibody

7 Images

[Go to Product page](#)

Overview

Quantity:	100 µL
Target:	ADRA1B
Reactivity:	Human, Mouse, Rat
Host:	Rabbit
Clonality:	Polyclonal
Conjugate:	This ADRA1B antibody is un-conjugated
Application:	Immunohistochemistry (IHC), Immunofluorescence (IF)

Product Details

Immunogen:	KLH conjugated Synthetic peptide corresponding to Mouse ADRA1B
Cross-Reactivity:	Human, Rat
Purification:	Affinity purification

Target Details

Target:	ADRA1B
Alternative Name:	ADRA1B (ADRA1B Products)
Background:	Alpha-1-adrenergic receptors (alpha-1-ARs) are members of the G protein-coupled receptor superfamily. They activate mitogenic responses and regulate growth and proliferation of many cells. There are 3 alpha-1-AR subtypes: alpha-1A, -1B and -1D, all of which signal through the Gq/11 family of G-proteins and different subtypes show different patterns of activation. This gene encodes alpha-1B-adrenergic receptor, which induces neoplastic transformation when

Target Details

transfected into NIH 3T3 fibroblasts and other cell lines. Thus, this normal cellular gene is identified as a protooncogene. This gene comprises 2 exons and a single large intron of at least 20 kb that interrupts the coding region.

UniProt: [P97717](#)

Pathways: [AMPK Signaling](#), [Carbohydrate Homeostasis](#), [Regulation of Carbohydrate Metabolic Process](#)

Application Details

Application Notes: IHC/IF (H,M,R) 1:400-1:1200

Restrictions: For Research Use only

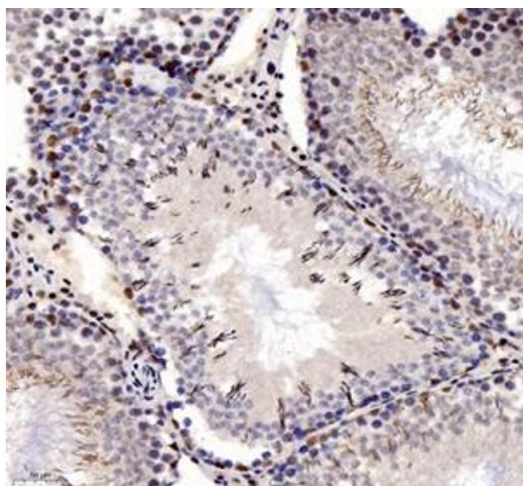
Handling

Buffer: , 0.02 % sodium azide

Preservative: Sodium azide

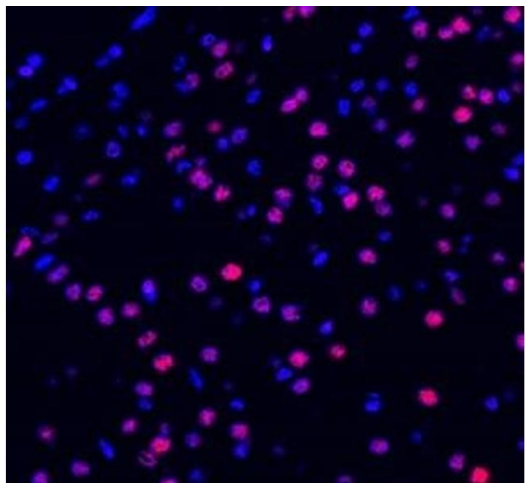
Precaution of Use: This product contains Sodium azide: a POISONOUS AND HAZARDOUS SUBSTANCE which should be handled by trained staff only.

Images



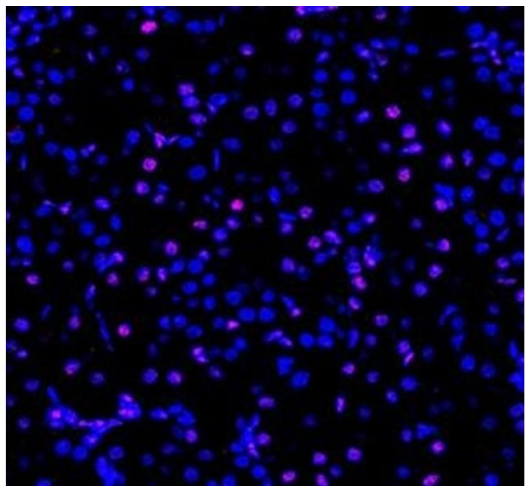
Immunohistochemistry (Paraffin-embedded Sections)

Image 1. Immunohistochemistry analysis of paraffin-embedded rat testis using ADRA1B (ABIN7072974) at dilution of 1: 1200



Immunofluorescence (fixed cells)

Image 2. Immunofluorescent analysis of paraformaldehyde-fixed mouse brain using ADRA1B (ABIN7072974) at dilution of 1: 1200



Immunofluorescence (fixed cells)

Image 3. Immunofluorescent analysis of paraformaldehyde-fixed rat kidney using ADRA1B (ABIN7072974) at dilution of 1: 1200

Please check the [product details page](#) for more images. Overall 7 images are available for ABIN7072974.