

Datasheet for ABIN7073021

anti-Fetuin A antibody**6** Images[Go to Product page](#)

Overview

Quantity:	100 µL
Target:	Fetuin A (AHSG)
Reactivity:	Human, Mouse, Rat
Host:	Rabbit
Clonality:	Polyclonal
Conjugate:	This Fetuin A antibody is un-conjugated
Application:	Immunohistochemistry (IHC), Immunofluorescence (IF)

Product Details

Immunogen:	KLH conjugated Synthetic peptide corresponding to Mouse AHSG
Cross-Reactivity:	Human, Rat
Purification:	Affinity purification

Target Details

Target:	Fetuin A (AHSG)
Alternative Name:	AHSG (AHSG Products)
Background:	Fetuin-A, also named as Alpha2-HS glycoprotein (AHSG), is a member of cystatin superfamily of protease inhibitors. It is a highly expressed glycoprotein in various fetal tissues whereas it is mainly expressed by the liver in adults. Fetuin A, an extracellular inhibitor of transforming growth factor β , is a profibrogenic stimulus in liver disease. Circulating fetuin-A may be a beneficial serum biomarker in the detection of liver and vascular fibrosis progression in patients

Target Details

with non-alcoholic fatty liver disease.

Gene ID: 11625

NCBI Accession: [NP_038493](#)

UniProt: [P29699](#)

Application Details

Application Notes: IHC/IF (H,M,R) 1:700-1:4000/1:600-1:1400

Restrictions: For Research Use only

Handling

Format: Liquid

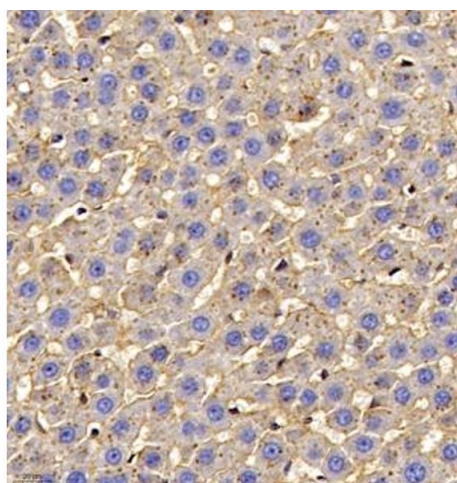
Buffer: PBS, pH 7.4, 0.02 % sodium azide

Preservative: Sodium azide

Precaution of Use: This product contains Sodium azide: a POISONOUS AND HAZARDOUS SUBSTANCE which should be handled by trained staff only.

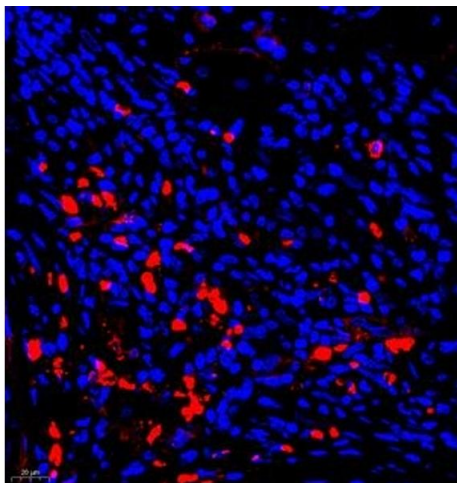
Storage: -20 °C

Images



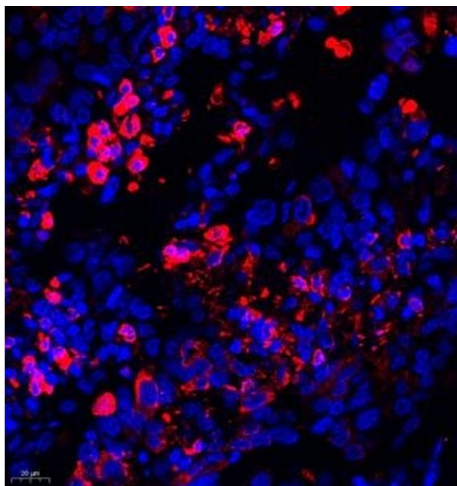
Immunohistochemistry (Paraffin-embedded Sections)

Image 1. Immunohistochemistry of paraffin embedded rat liver using AHSG (ABIN7073021) at dilution of 1:700 (400x lens)



Immunofluorescence (Paraffin-embedded Sections)

Image 2. Immunofluorescence of paraffin embedded human liver cancer using AHSG (ABIN7073021) at dilution of 1:650 (400x lens)



Immunofluorescence (Paraffin-embedded Sections)

Image 3. Immunofluorescence of paraffin embedded human lung cancer using AHSG (ABIN7073021) at dilution of 1:650 (400x lens)

Please check the [product details page](#) for more images. Overall 6 images are available for ABIN7073021.