

Datasheet for ABIN7073023  
**anti-alpha Actinin antibody**

8 Images

[Go to Product page](#)

## Overview

Quantity:	100 µL
Target:	alpha Actinin (ACTN)
Reactivity:	Human, Mouse, Rat
Host:	Rabbit
Clonality:	Polyclonal
Conjugate:	This alpha Actinin antibody is un-conjugated
Application:	Western Blotting (WB), Immunohistochemistry (IHC), Immunofluorescence (IF)

## Product Details

Immunogen:	KLH conjugated Synthetic peptide corresponding to Human ACTN1
Cross-Reactivity:	Mouse, Rat
Purification:	Affinity purification

## Target Details

Target:	alpha Actinin (ACTN)
Alternative Name:	alpha Actinin ( <a href="#">ACTN Products</a> )
Background:	Alpha actinins belong to the spectrin gene superfamily which represents a diverse group of cytoskeletal proteins, including the alpha and beta spectrins and dystrophins. Alpha actinin is an actin-binding protein with multiple roles in different cell types. In nonmuscle cells, the cytoskeletal isoform is found along microfilament bundles and adherens-type junctions, where it is involved in binding actin to the membrane. In contrast, skeletal, cardiac, and smooth

## Target Details

muscle isoforms are localized to the Z-disc and analogous dense bodies, where they help anchor the myofibrillar actin filaments.

Molecular Weight:	103 kDa
Gene ID:	109711
NCBI Accession:	<a href="#">NP_001093</a>
UniProt:	<a href="#">P12814</a>
Pathways:	<a href="#">Cell-Cell Junction Organization</a> , <a href="#">Negative Regulation of Transporter Activity</a>

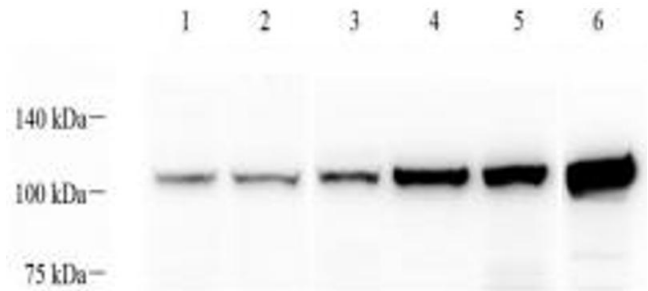
## Application Details

Application Notes:	WB (H,M,R) 1:500-1:1000, IHC/IF (M,R) 1:500-1:1000/1:500-1:1000
Restrictions:	For Research Use only

## Handling

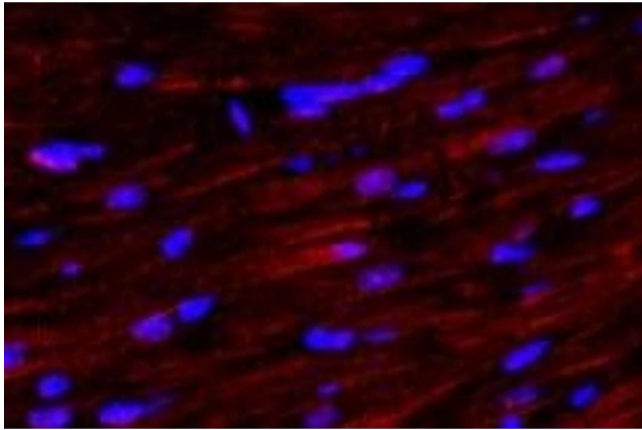
Format:	Liquid
Buffer:	PBS, pH 7.4, 0.02 % sodium azide
Preservative:	Sodium azide
Precaution of Use:	This product contains Sodium azide: a POISONOUS AND HAZARDOUS SUBSTANCE which should be handled by trained staff only.
Storage:	-20 °C

## Images



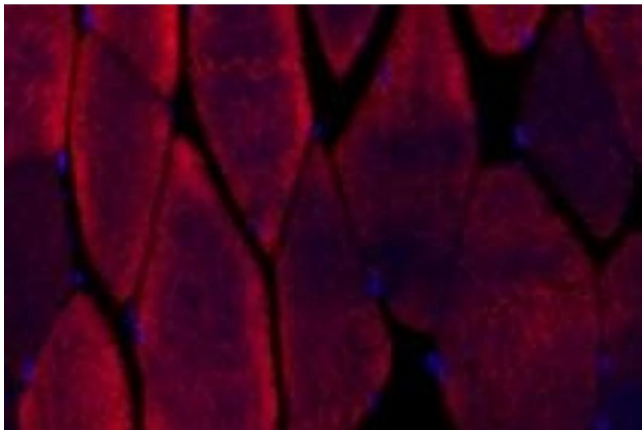
### Western Blotting

**Image 1.** Western blot analysis of alpha Actinin (ABIN7073023) at dilution of 1: 1000, Lane 1: MCF7 cell lysate, Lane 2: HeLa cell lysate, Lane 3: Mouse spleen tissue lysate, Lane 4: Mouse skeletal muscle tissue lysate, Lane 5: Mouse heart tissue lysate, Lane 6: Rat skeletal muscle tissue lysate



### Immunofluorescence (fixed cells)

**Image 2.** Immunofluorescent analysis of paraformaldehyde-fixed mouse heart using alpha Actinin (ABIN7073023) at dilution of 1: 500



### Immunofluorescence (fixed cells)

**Image 3.** Immunofluorescent analysis of paraformaldehyde-fixed mouse muscle using alpha Actinin (ABIN7073023) at dilution of 1: 500

Please check the [product details page](#) for more images. Overall 8 images are available for ABIN7073023.